

The ANOVA Procedure

| Class Level Information | | |
|-------------------------|--------|-----------------------|
| Class | Levels | Values |
| PPAGECT4 | 4 | 18-29 30-44 45-59 60+ |

| | |
|-----------------------------|------|
| Number of Observations Read | 2294 |
| Number of Observations Used | 1998 |

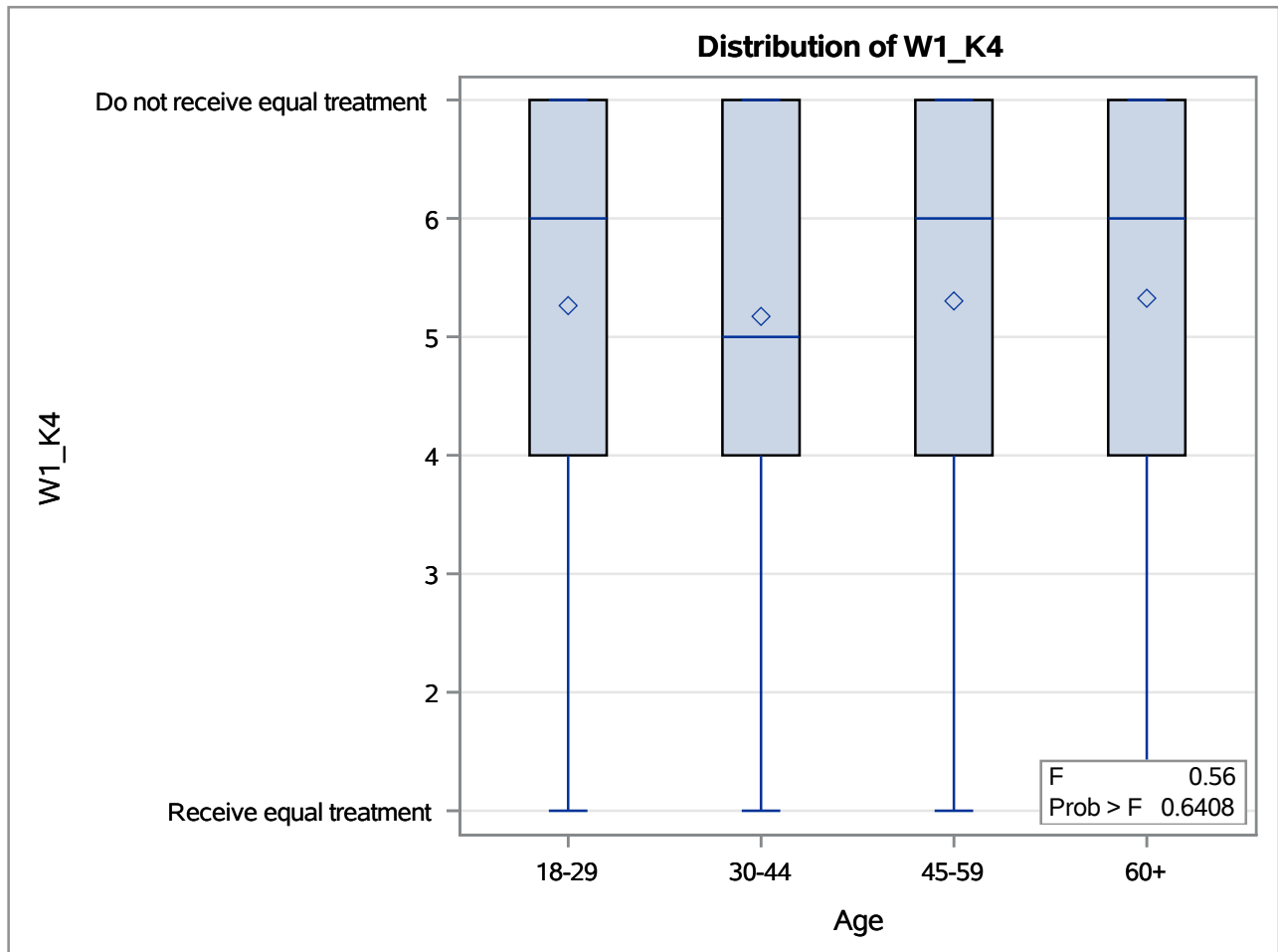
The ANOVA Procedure

Dependent Variable: W1_K4 Do you think that blacks & other minorities are treated the same as whites in the criminal justice system?

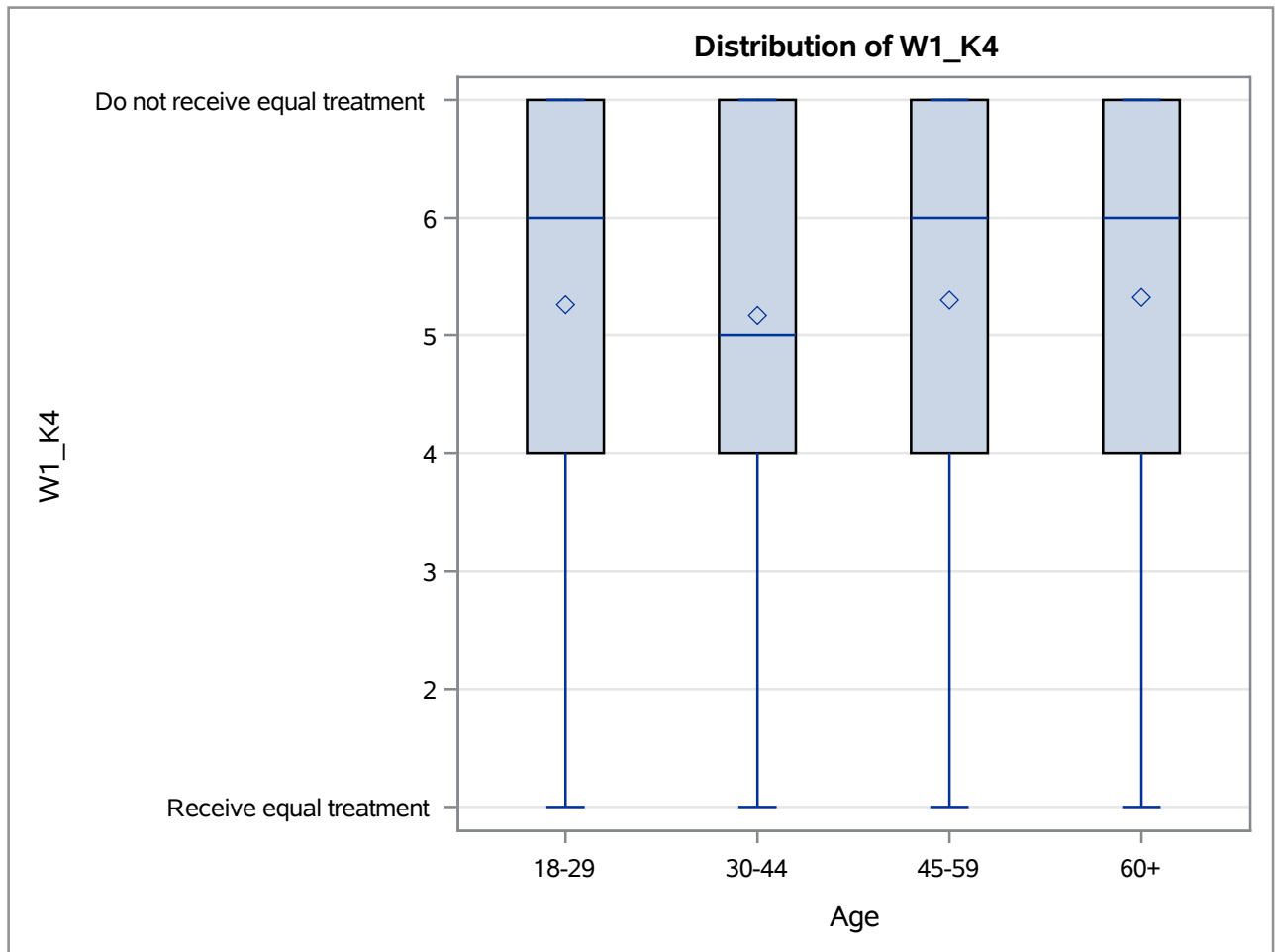
| Source | DF | Sum of Squares | Mean Square | F Value | Pr > F |
|-----------------|------|----------------|-------------|---------|--------|
| Model | 3 | 6.425600 | 2.141867 | 0.56 | 0.6408 |
| Error | 1994 | 7613.962788 | 3.818437 | | |
| Corrected Total | 1997 | 7620.388388 | | | |

| R-Square | Coeff Var | Root MSE | W1_K4 Mean |
|----------|-----------|----------|------------|
| 0.000843 | 37.02822 | 1.954082 | 5.277277 |

| Source | DF | Anova SS | Mean Square | F Value | Pr > F |
|----------|----|------------|-------------|---------|--------|
| PPAGECT4 | 3 | 6.42560021 | 2.14186674 | 0.56 | 0.6408 |



The ANOVA Procedure



The ANOVA Procedure

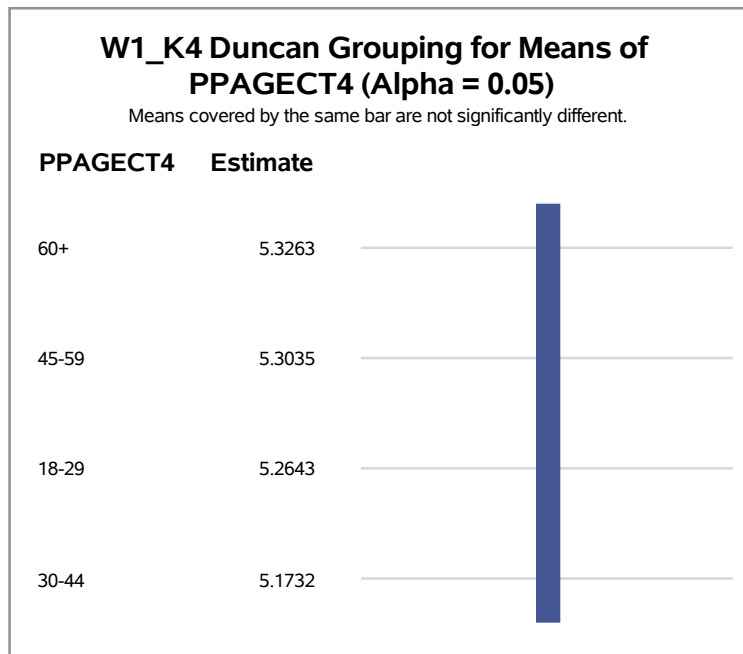
Duncan's Multiple Range Test for W1_K4

Note: This test controls the Type I comparisonwise error rate, not the experimentwise error rate.

| | |
|-----------------------------|----------|
| Alpha | 0.05 |
| Error Degrees of Freedom | 1994 |
| Error Mean Square | 3.818437 |
| Harmonic Mean of Cell Sizes | 463.5068 |

Note: Cell sizes are not equal.

| | | | |
|-----------------|-------|-------|-------|
| Number of Means | 2 | 3 | 4 |
| Critical Range | .2517 | .2650 | .2740 |



The ANOVA Procedure

| Class Level Information | | |
|-------------------------|--------|--|
| Class | Levels | Values |
| PPEDUCAT | 2 | High School or lower Some college or higher |

| | |
|-----------------------------|------|
| Number of Observations Read | 2294 |
| Number of Observations Used | 1998 |

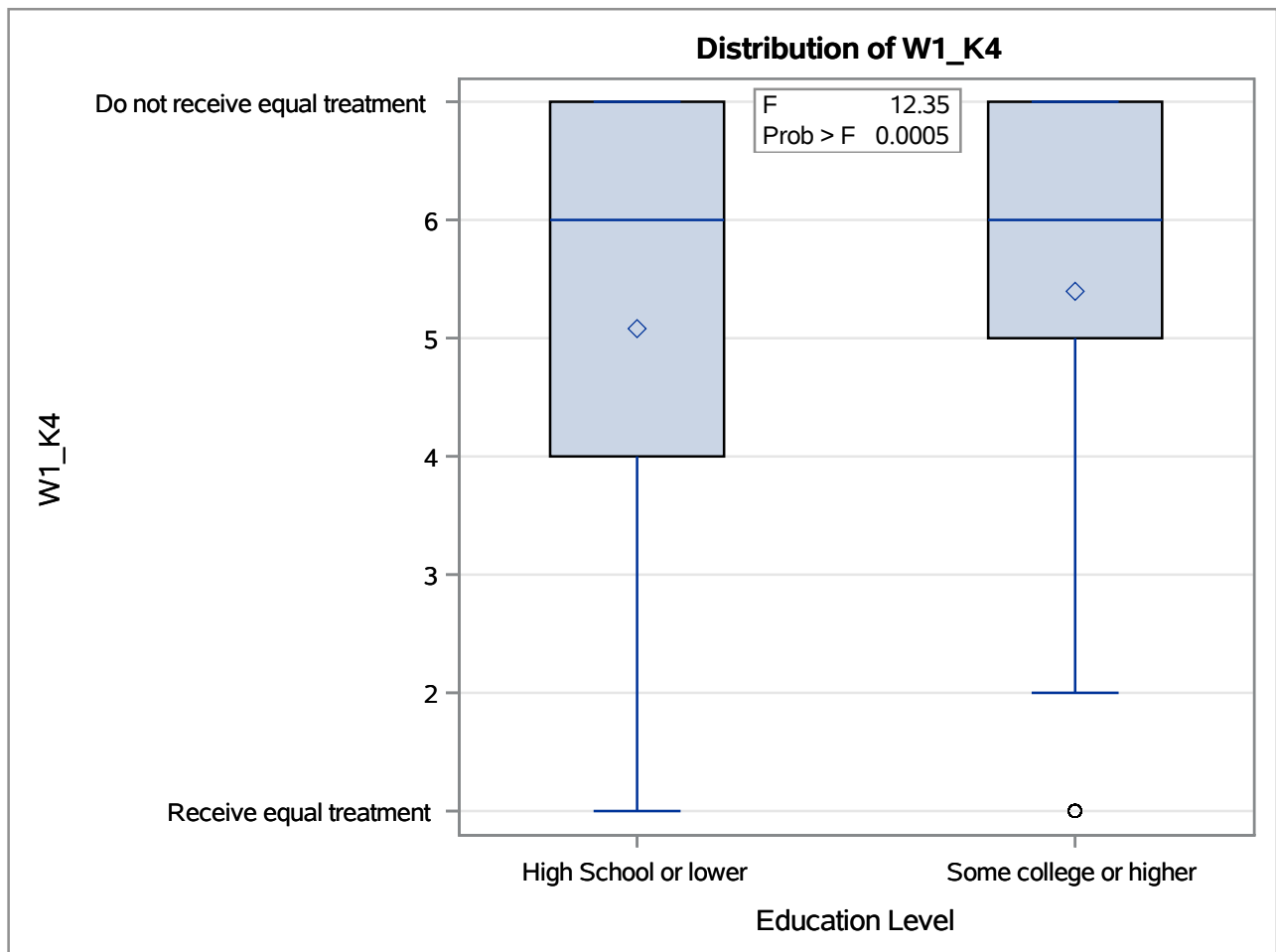
The ANOVA Procedure

Dependent Variable: W1_K4 Do you think that blacks & other minorities are treated the same as whites in the criminal justice system?

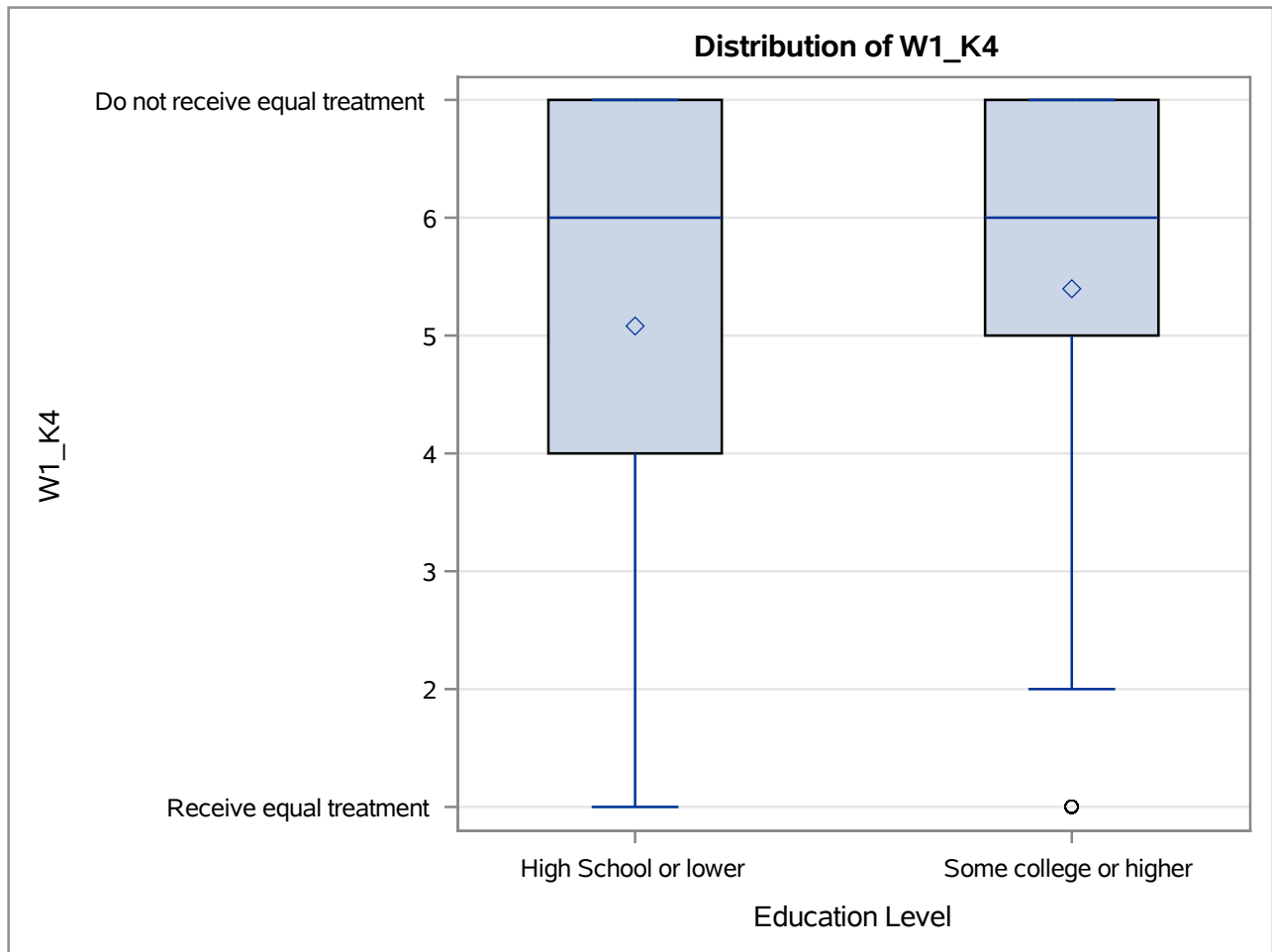
| Source | DF | Sum of Squares | Mean Square | F Value | Pr > F |
|-----------------|------|----------------|-------------|---------|--------|
| Model | 1 | 46.851057 | 46.851057 | 12.35 | 0.0005 |
| Error | 1996 | 7573.537332 | 3.794357 | | |
| Corrected Total | 1997 | 7620.388388 | | | |

| R-Square | Coeff Var | Root MSE | W1_K4 Mean |
|----------|-----------|----------|------------|
| 0.006148 | 36.91129 | 1.947911 | 5.277277 |

| Source | DF | Anova SS | Mean Square | F Value | Pr > F |
|----------|----|-------------|-------------|---------|--------|
| PPEDUCAT | 1 | 46.85105668 | 46.85105668 | 12.35 | 0.0005 |



The ANOVA Procedure



The ANOVA Procedure

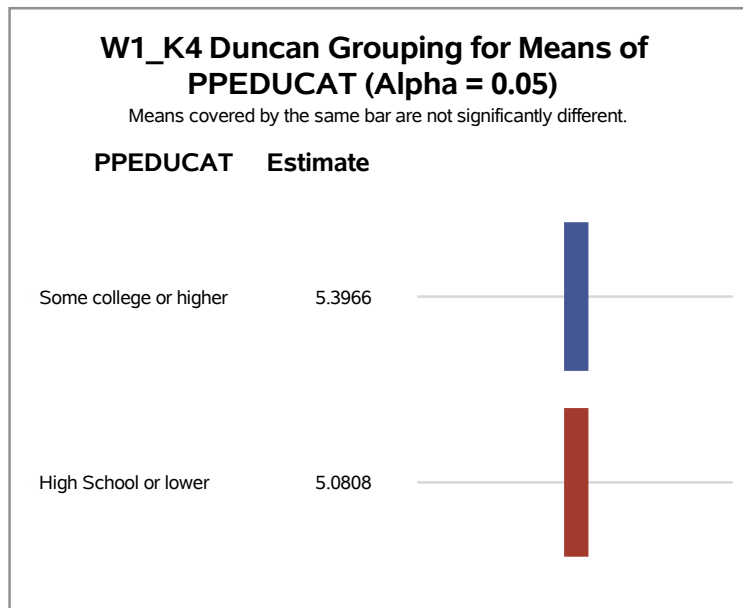
Duncan's Multiple Range Test for W1_K4

Note: This test controls the Type I comparisonwise error rate, not the experimentwise error rate.

| | |
|-----------------------------|----------|
| Alpha | 0.05 |
| Error Degrees of Freedom | 1996 |
| Error Mean Square | 3.794357 |
| Harmonic Mean of Cell Sizes | 939.4044 |

Note: Cell sizes are not equal.

| | |
|-----------------|-------|
| Number of Means | 2 |
| Critical Range | .1763 |



The ANOVA Procedure

| Class Level Information | | |
|-------------------------|--------|-----------------------|
| Class | Levels | Values |
| PPAGECT4 | 4 | 18-29 30-44 45-59 60+ |

| | |
|-----------------------------|------|
| Number of Observations Read | 2294 |
| Number of Observations Used | 2230 |

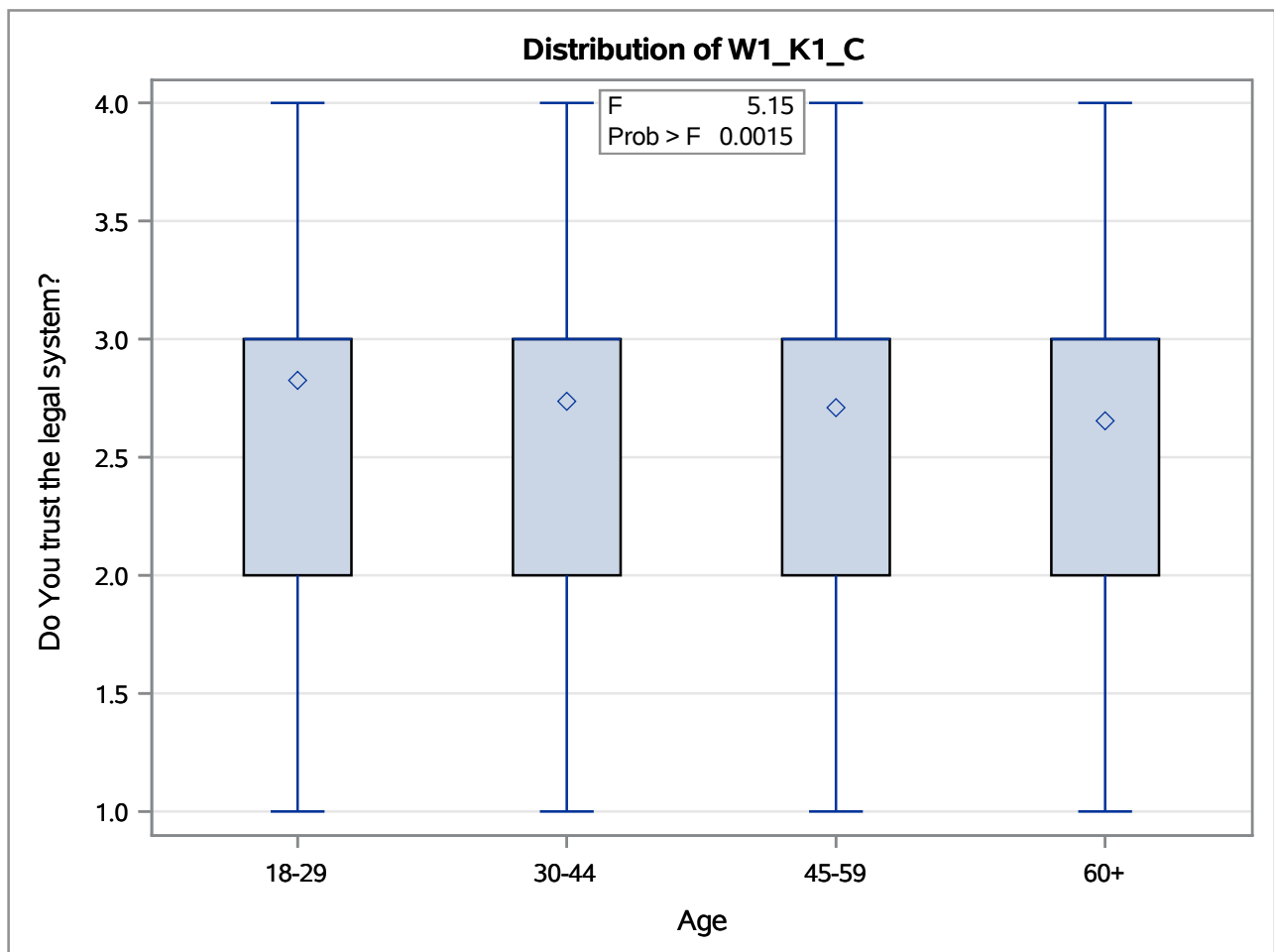
The ANOVA Procedure

Dependent Variable: W1_K1_C Do You trust the legal system?

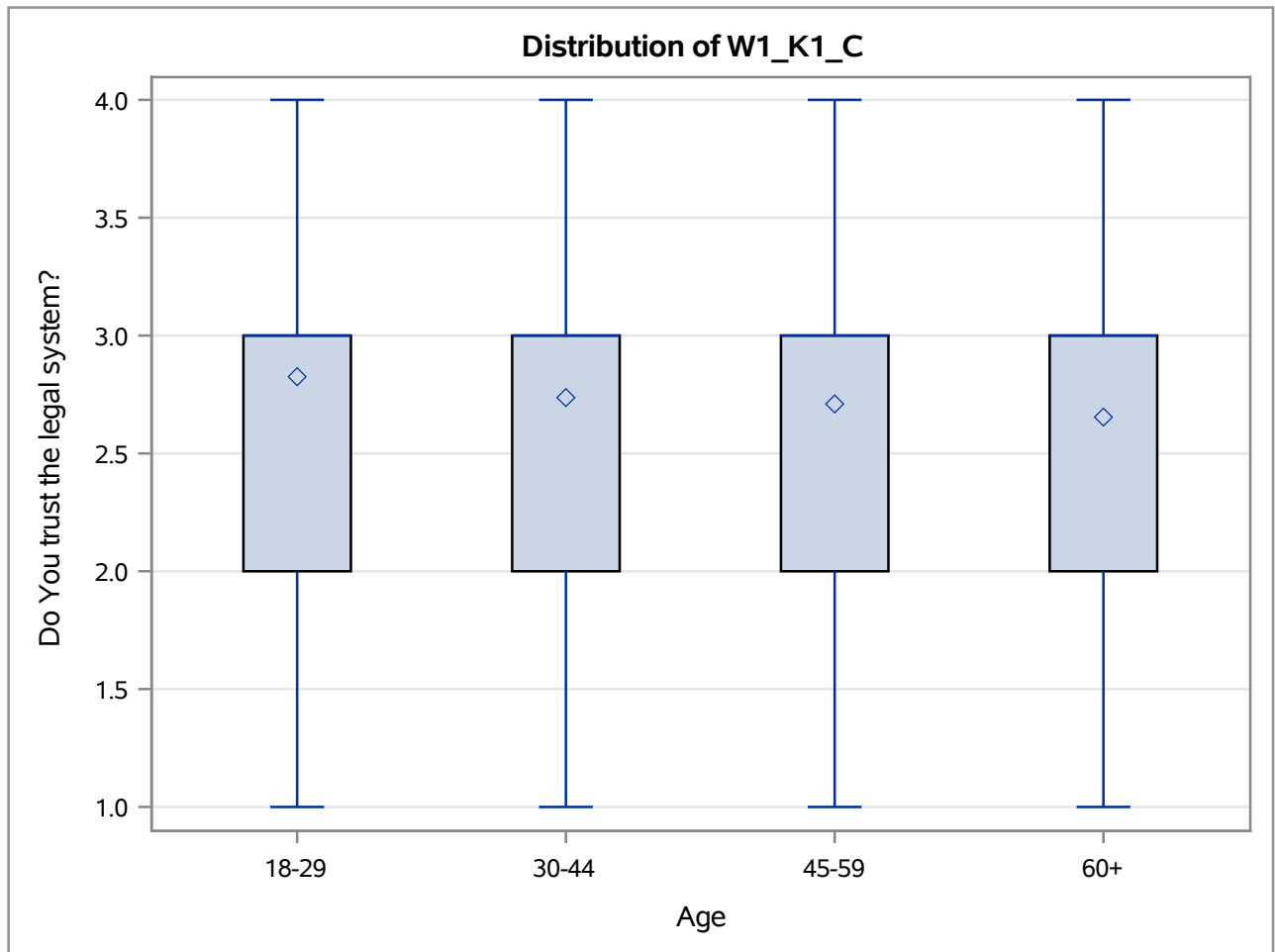
| Source | DF | Sum of Squares | Mean Square | F Value | Pr > F |
|-----------------|------|----------------|-------------|---------|--------|
| Model | 3 | 7.376733 | 2.458911 | 5.15 | 0.0015 |
| Error | 2226 | 1062.205778 | 0.477181 | | |
| Corrected Total | 2229 | 1069.582511 | | | |

| R-Square | Coeff Var | Root MSE | W1_K1_C Mean |
|----------|-----------|----------|--------------|
| 0.006897 | 25.41571 | 0.690783 | 2.717937 |

| Source | DF | Anova SS | Mean Square | F Value | Pr > F |
|----------|----|------------|-------------|---------|--------|
| PPAGECT4 | 3 | 7.37673291 | 2.45891097 | 5.15 | 0.0015 |



The ANOVA Procedure



The ANOVA Procedure

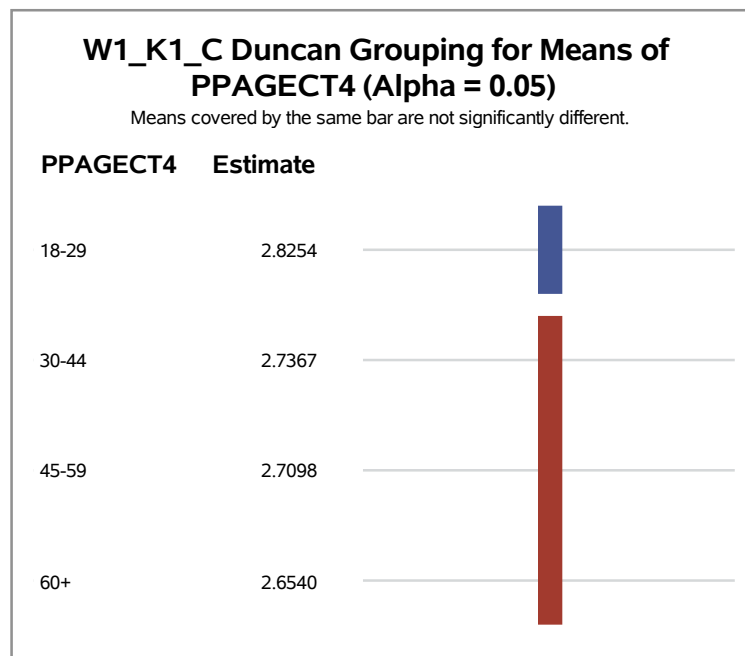
Duncan's Multiple Range Test for W1_K1_C

Note: This test controls the Type I comparisonwise error rate, not the experimentwise error rate.

| | |
|-----------------------------|----------|
| Alpha | 0.05 |
| Error Degrees of Freedom | 2226 |
| Error Mean Square | 0.477181 |
| Harmonic Mean of Cell Sizes | 521.8335 |

Note: Cell sizes are not equal.

| | | | |
|-----------------|--------|--------|--------|
| Number of Means | 2 | 3 | 4 |
| Critical Range | .08386 | .08830 | .09127 |



The ANOVA Procedure

| Class Level Information | | |
|-------------------------|--------|--|
| Class | Levels | Values |
| PPEDUCAT | 2 | High School or lower Some college or higher |

| | |
|-----------------------------|------|
| Number of Observations Read | 2294 |
| Number of Observations Used | 2230 |

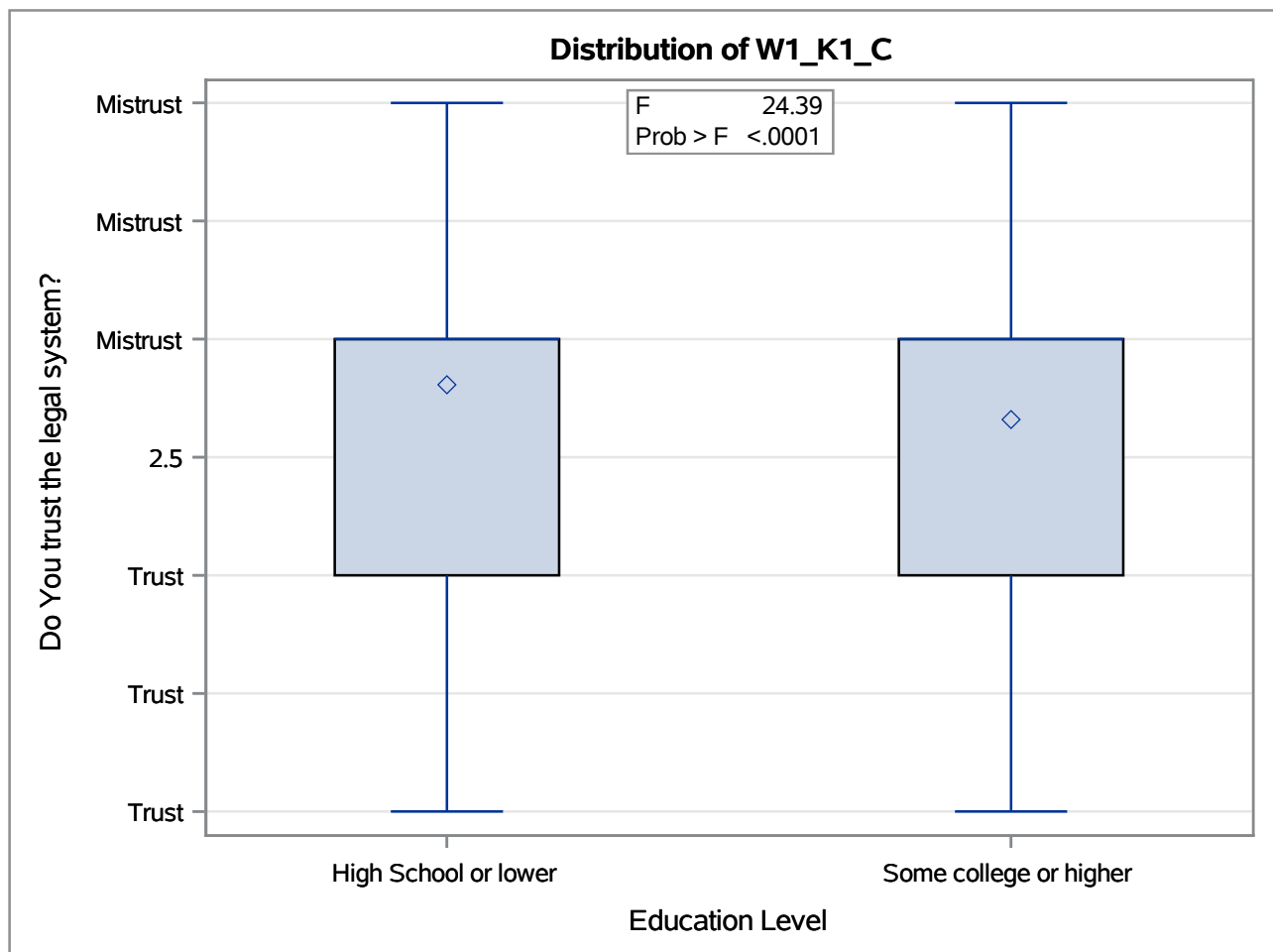
The ANOVA Procedure

Dependent Variable: W1_K1_C Do You trust the legal system?

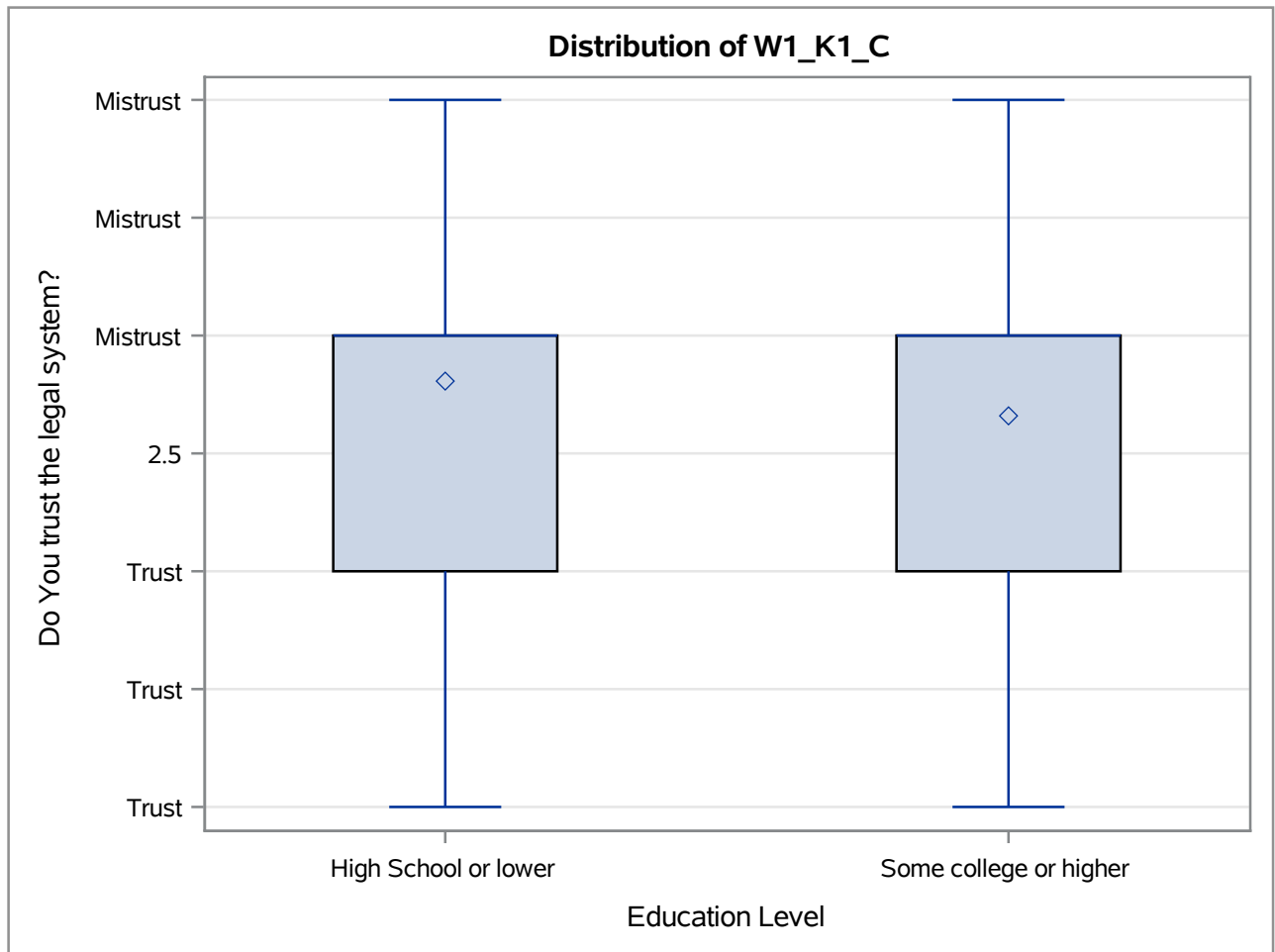
| Source | DF | Sum of Squares | Mean Square | F Value | Pr > F |
|-----------------|------|----------------|-------------|---------|--------|
| Model | 1 | 11.581553 | 11.581553 | 24.39 | <.0001 |
| Error | 2228 | 1058.000958 | 0.474866 | | |
| Corrected Total | 2229 | 1069.582511 | | | |

| R-Square | Coeff Var | Root MSE | W1_K1_C Mean |
|----------|-----------|----------|--------------|
| 0.010828 | 25.35397 | 0.689105 | 2.717937 |

| Source | DF | Anova SS | Mean Square | F Value | Pr > F |
|----------|----|-------------|-------------|---------|--------|
| PPEDUCAT | 1 | 11.58155349 | 11.58155349 | 24.39 | <.0001 |



The ANOVA Procedure



The ANOVA Procedure

Duncan's Multiple Range Test for W1_K1_C

Note: This test controls the Type I comparisonwise error rate, not the experimentwise error rate.

| | |
|-----------------------------|----------|
| Alpha | 0.05 |
| Error Degrees of Freedom | 2228 |
| Error Mean Square | 0.474866 |
| Harmonic Mean of Cell Sizes | 1067.556 |

Note: Cell sizes are not equal.

| | |
|-----------------|--------|
| Number of Means | 2 |
| Critical Range | .05849 |

