

The FREQ Procedure

Do You trust the legal system?				
W1_K1_C	Frequency	Percent	Cumulative Frequency	Cumulative Percent
Trust	63	2.83	63	2.83
2	749	33.59	812	36.41
3	1172	52.56	1984	88.97
Mistrust	246	11.03	2230	100.00
Frequency Missing = 64				

Education Level				
PPEDUCAT	Frequency	Percent	Cumulative Frequency	Cumulative Percent
High School or lower	919	40.06	919	40.06
Some college or higher	1375	59.94	2294	100.00

Age				
PPAGECT4	Frequency	Percent	Cumulative Frequency	Cumulative Percent
18-29	397	17.31	397	17.31
30-44	489	21.32	886	38.62
45-59	710	30.95	1596	69.57
60+	698	30.43	2294	100.00

The ANOVA Procedure

Education Level=1

Class Level Information		
Class	Levels	Values
PPAGECT4	4	18-29 30-44 45-59 60+

Number of Observations Read	219
Number of Observations Used	207

The ANOVA Procedure

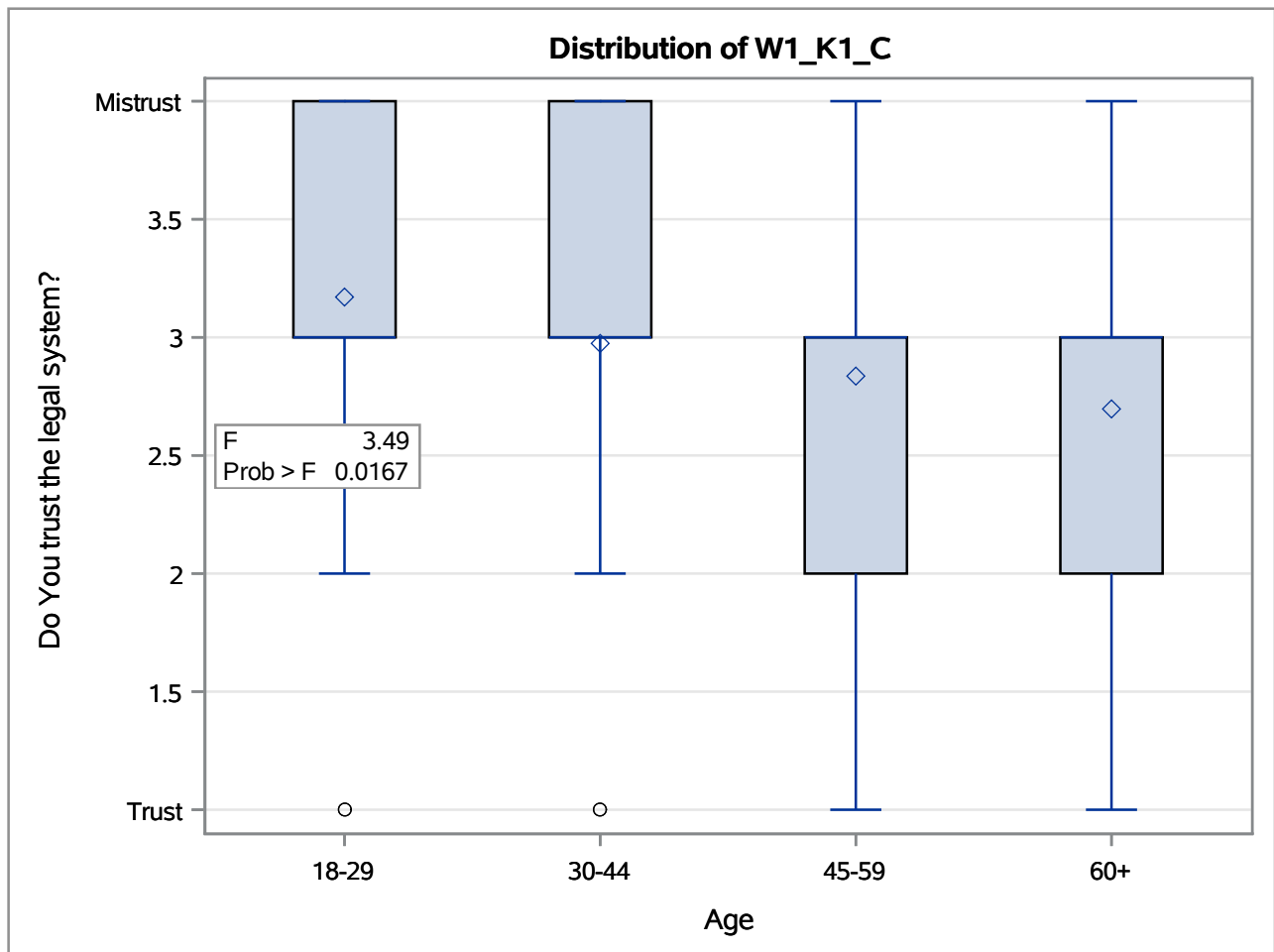
Dependent Variable: W1_K1_C Do You trust the legal system?

Education Level=1

Source	DF	Sum of Squares	Mean Square	F Value	Pr > F
Model	3	6.1381046	2.0460349	3.49	0.0167
Error	203	119.0792867	0.5865975		
Corrected Total	206	125.2173913			

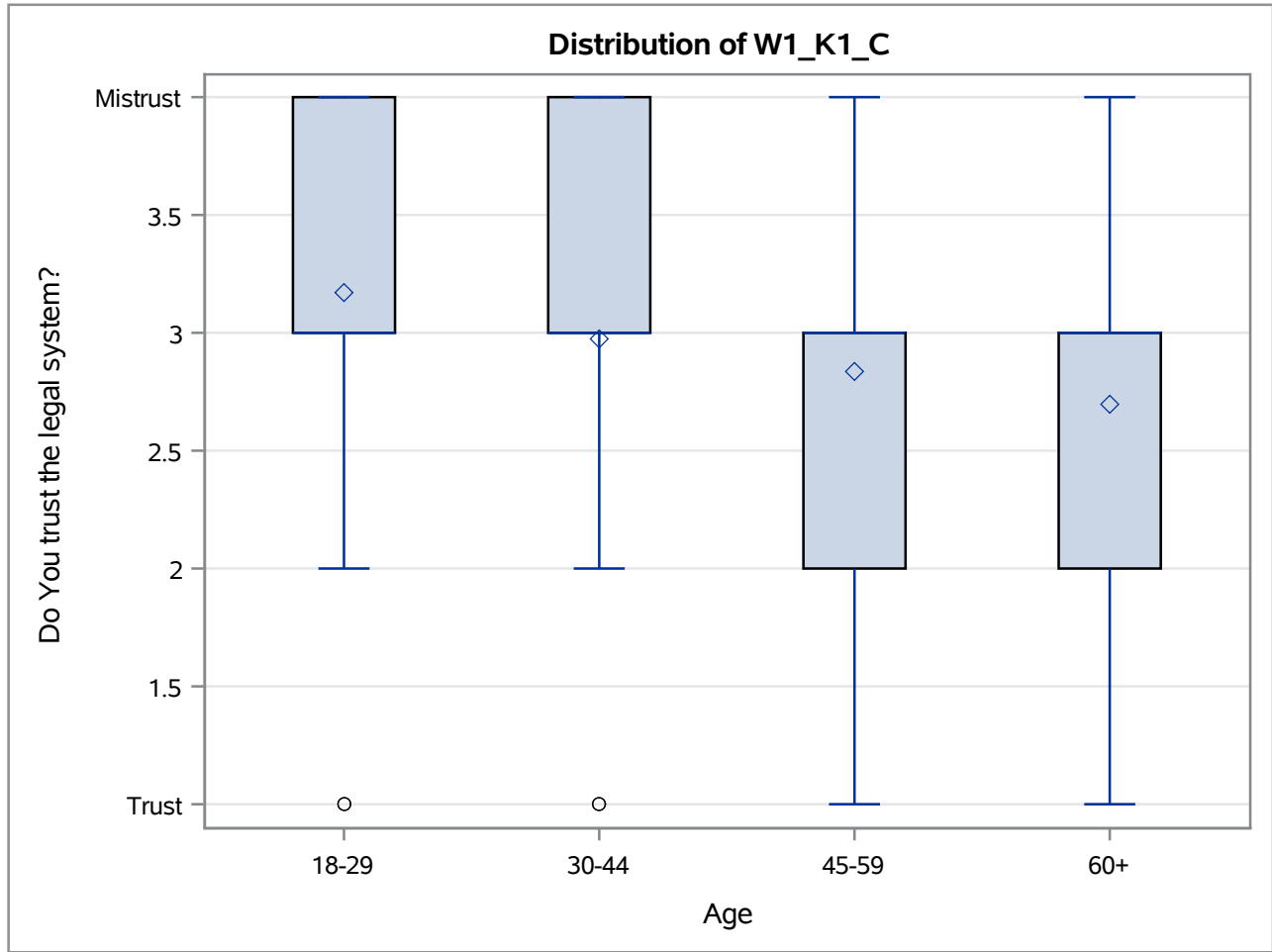
R-Square	Coeff Var	Root MSE	W1_K1_C Mean
0.049020	26.55621	0.765897	2.884058

Source	DF	Anova SS	Mean Square	F Value	Pr > F
PPAGECT4	3	6.13810460	2.04603487	3.49	0.0167



The ANOVA Procedure

Education Level=1



Level of PPAGECT4	N	W1_K1_C	
		Mean	Std Dev
18-29	41	3.17073171	0.86320447
30-44	39	2.97435897	0.81069105
45-59	61	2.83606557	0.75675465
60+	66	2.69696970	0.67867965

The ANOVA Procedure

Education Level=2

Class Level Information		
Class	Levels	Values
PPAGECT4	4	18-29 30-44 45-59 60+

Number of Observations Read	700
Number of Observations Used	678

The ANOVA Procedure

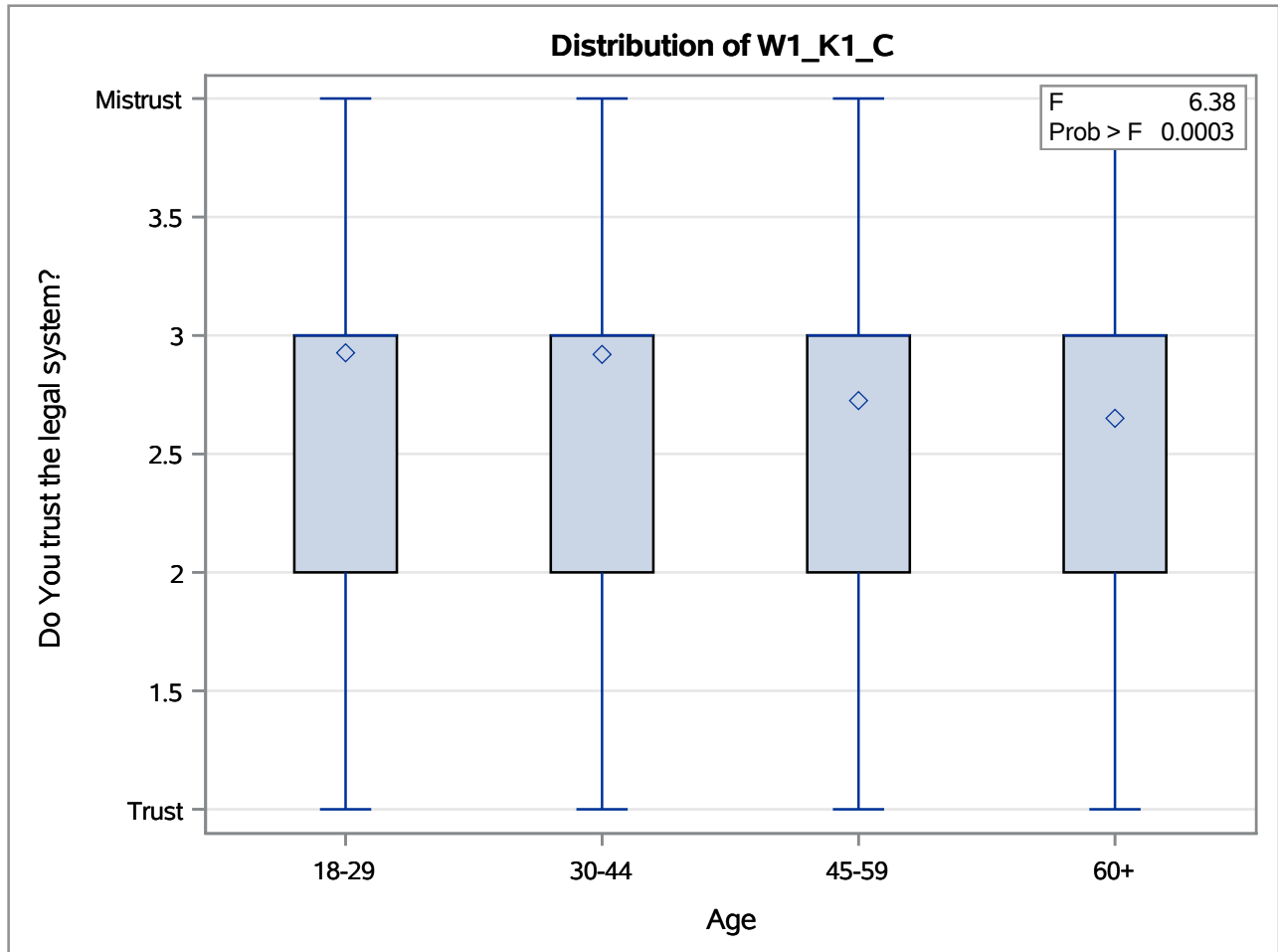
Dependent Variable: W1_K1_C Do You trust the legal system?

Education Level=2

Source	DF	Sum of Squares	Mean Square	F Value	Pr > F
Model	3	9.6924976	3.2308325	6.38	0.0003
Error	674	341.4358210	0.5065813		
Corrected Total	677	351.1283186			

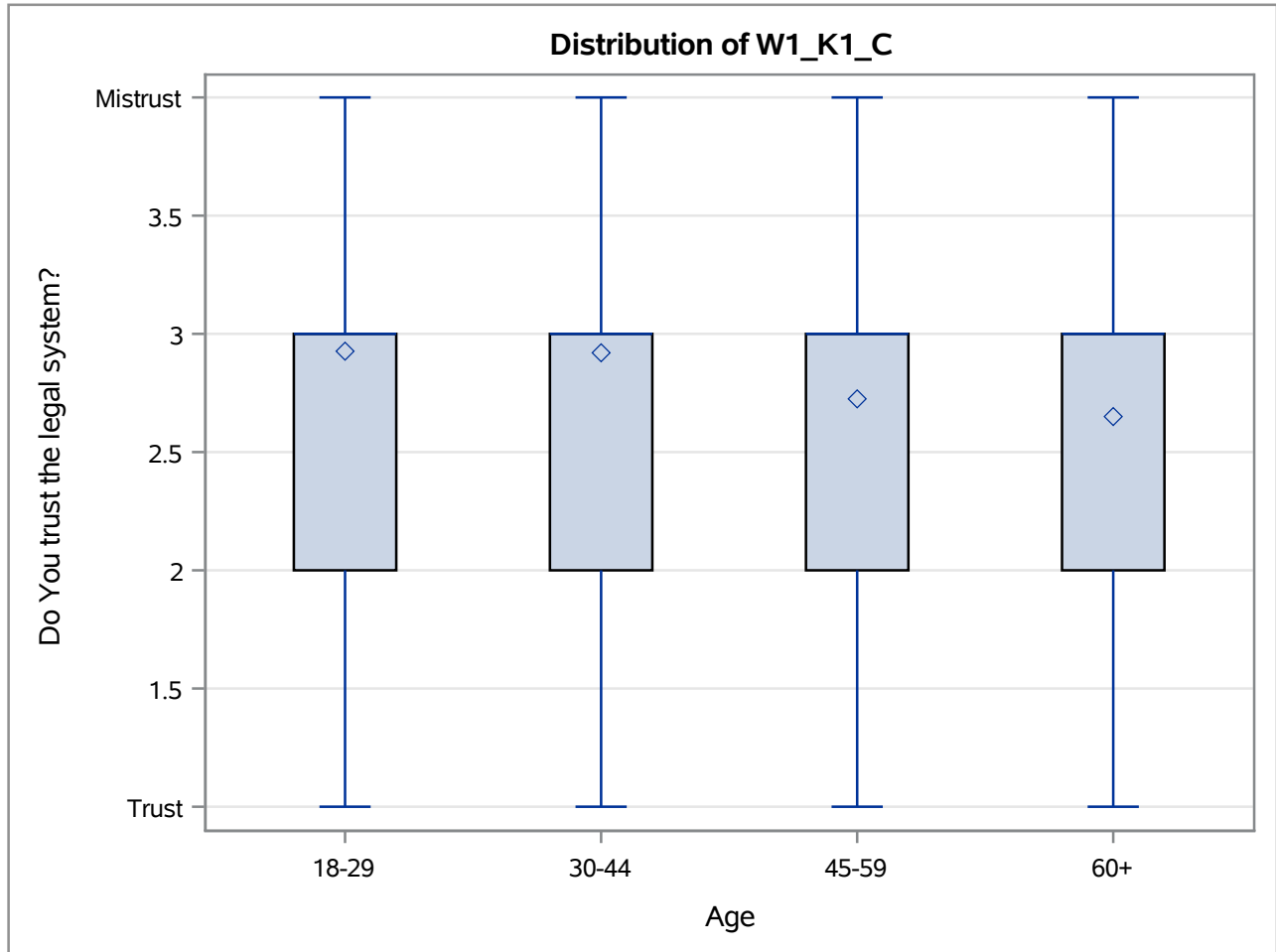
R-Square	Coeff Var	Root MSE	W1_K1_C Mean
0.027604	25.57304	0.711745	2.783186

Source	DF	Anova SS	Mean Square	F Value	Pr > F
PPAGECT4	3	9.69249757	3.23083252	6.38	0.0003



The ANOVA Procedure

Education Level=2



Level of PPAGECT4	N	W1_K1_C	
		Mean	Std Dev
18-29	150	2.92666667	0.74272007
30-44	125	2.92000000	0.80922105
45-59	200	2.72500000	0.70130890
60+	203	2.65024631	0.62997520

The ANOVA Procedure

Education Level=3

Class Level Information		
Class	Levels	Values
PPAGECT4	4	18-29 30-44 45-59 60+

Number of Observations Read	682
Number of Observations Used	664

The ANOVA Procedure

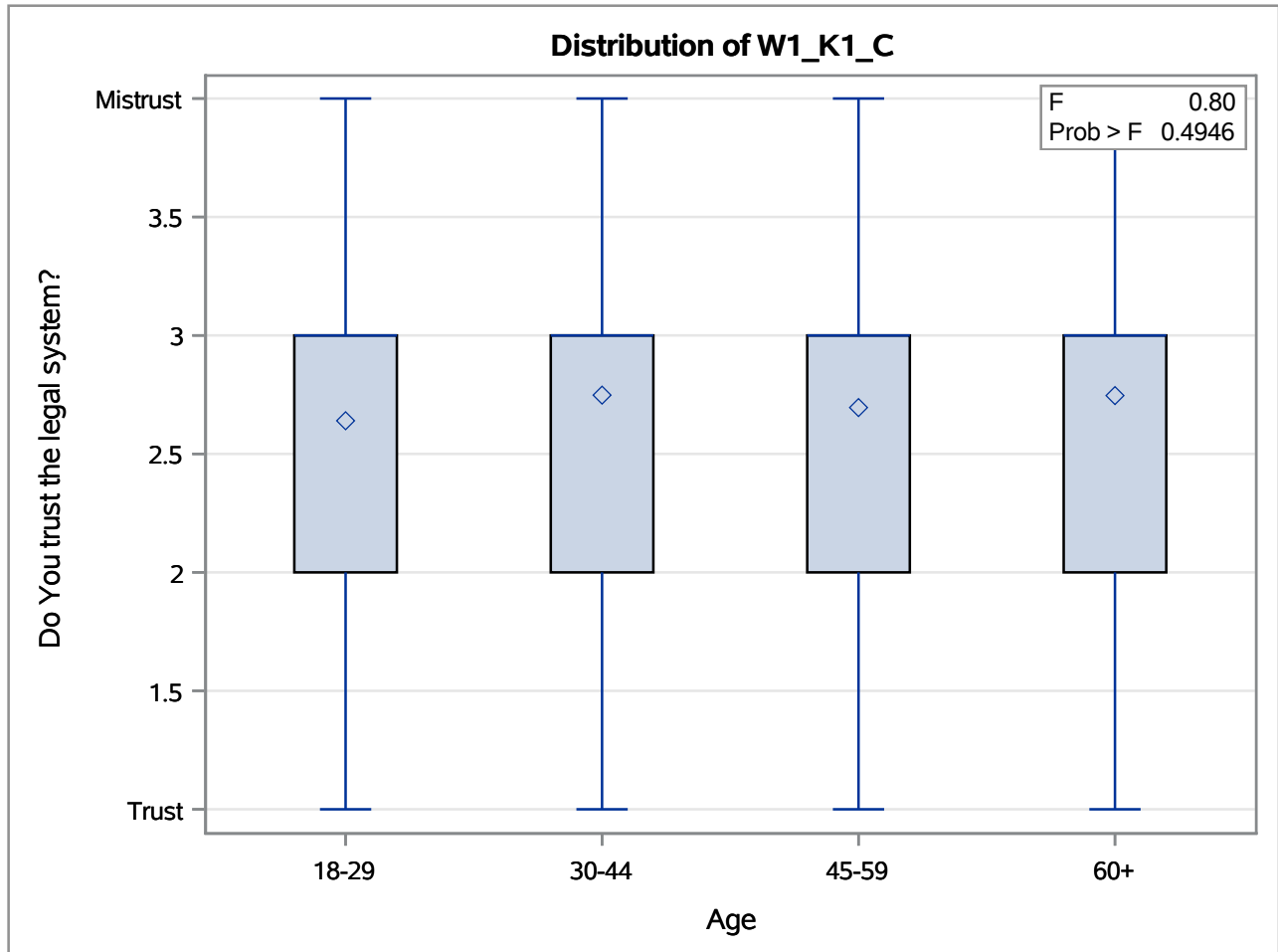
Dependent Variable: W1_K1_C Do You trust the legal system?

Education Level=3

Source	DF	Sum of Squares	Mean Square	F Value	Pr > F
Model	3	1.1091590	0.3697197	0.80	0.4946
Error	660	305.3727687	0.4626860		
Corrected Total	663	306.4819277			

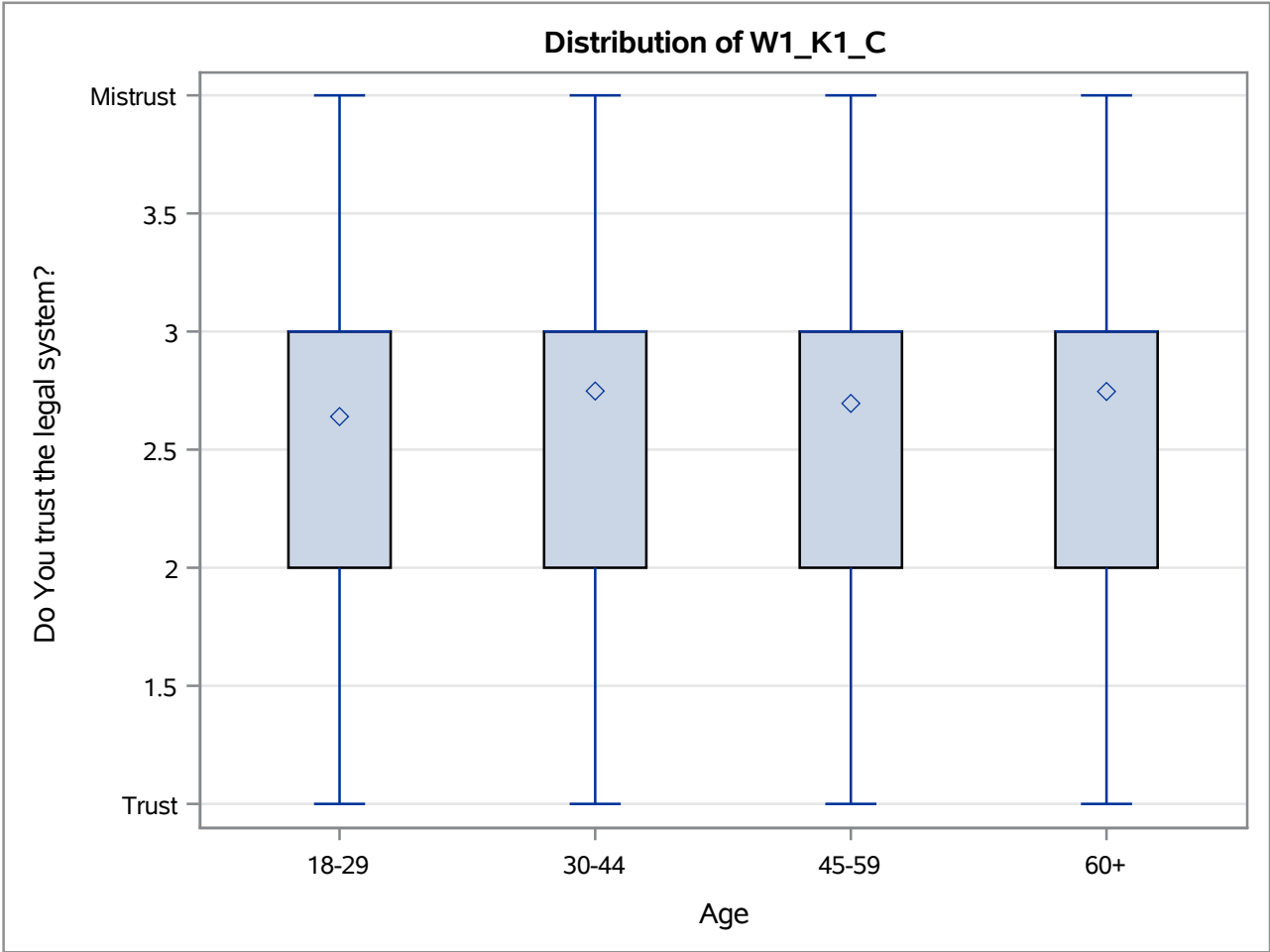
R-Square	Coeff Var	Root MSE	W1_K1_C Mean
0.003619	25.09220	0.680210	2.710843

Source	DF	Anova SS	Mean Square	F Value	Pr > F
PPAGECT4	3	1.10915905	0.36971968	0.80	0.4946



The ANOVA Procedure

Education Level=3



Level of PPAGECT4	N	W1_K1_C	
		Mean	Std Dev
18-29	125	2.64000000	0.70023038
30-44	135	2.74814815	0.73014534
45-59	207	2.69565217	0.67488254
60+	197	2.74619289	0.63611402

The ANOVA Procedure

Education Level=4

Class Level Information		
Class	Levels	Values
PPAGECT4	4	18-29 30-44 45-59 60+

Number of Observations Read	693
Number of Observations Used	681

The ANOVA Procedure

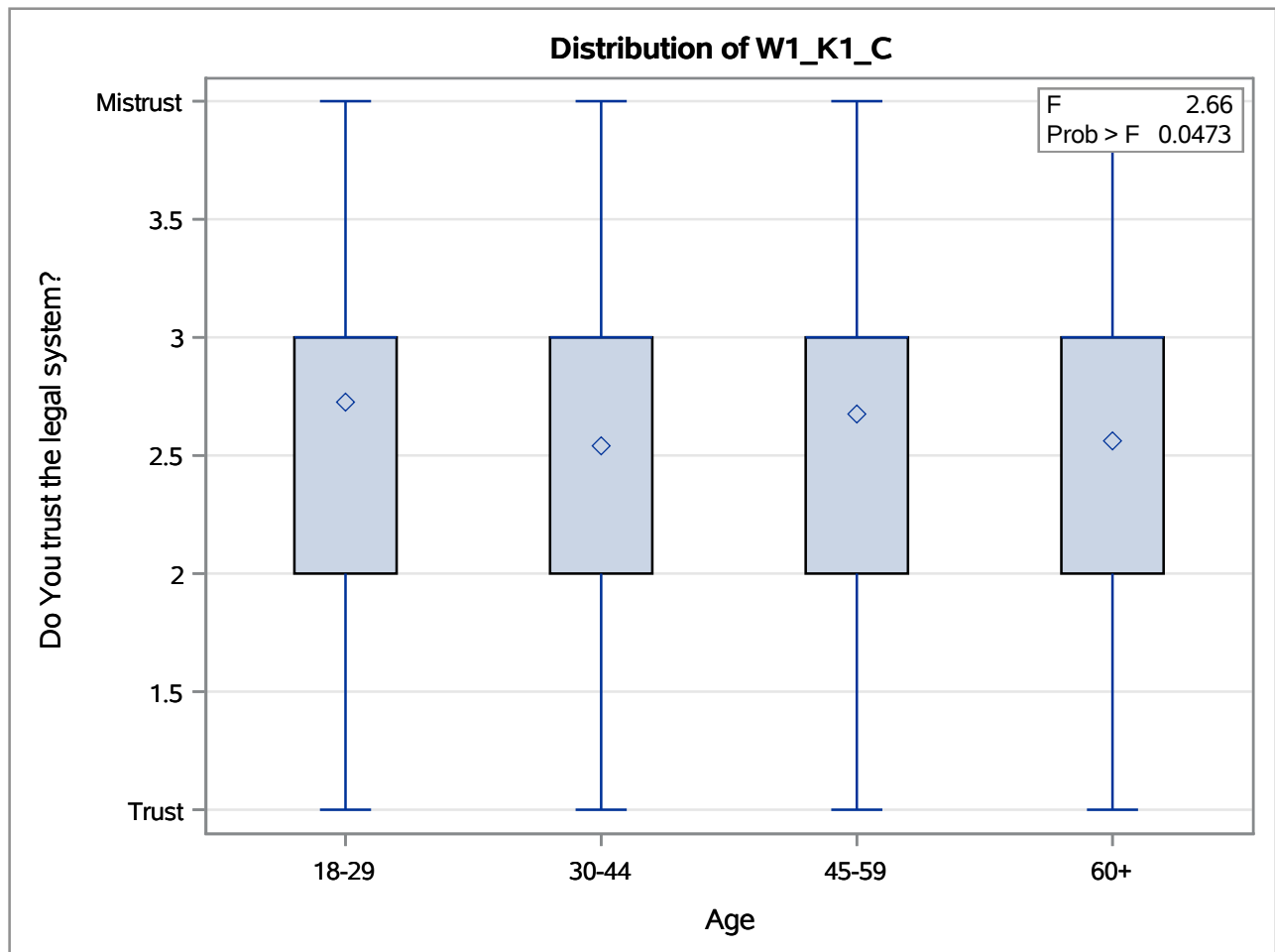
Dependent Variable: W1_K1_C Do You trust the legal system?

Education Level=4

Source	DF	Sum of Squares	Mean Square	F Value	Pr > F
Model	3	3.1457628	1.0485876	2.66	0.0473
Error	677	266.9540903	0.3943192		
Corrected Total	680	270.0998532			

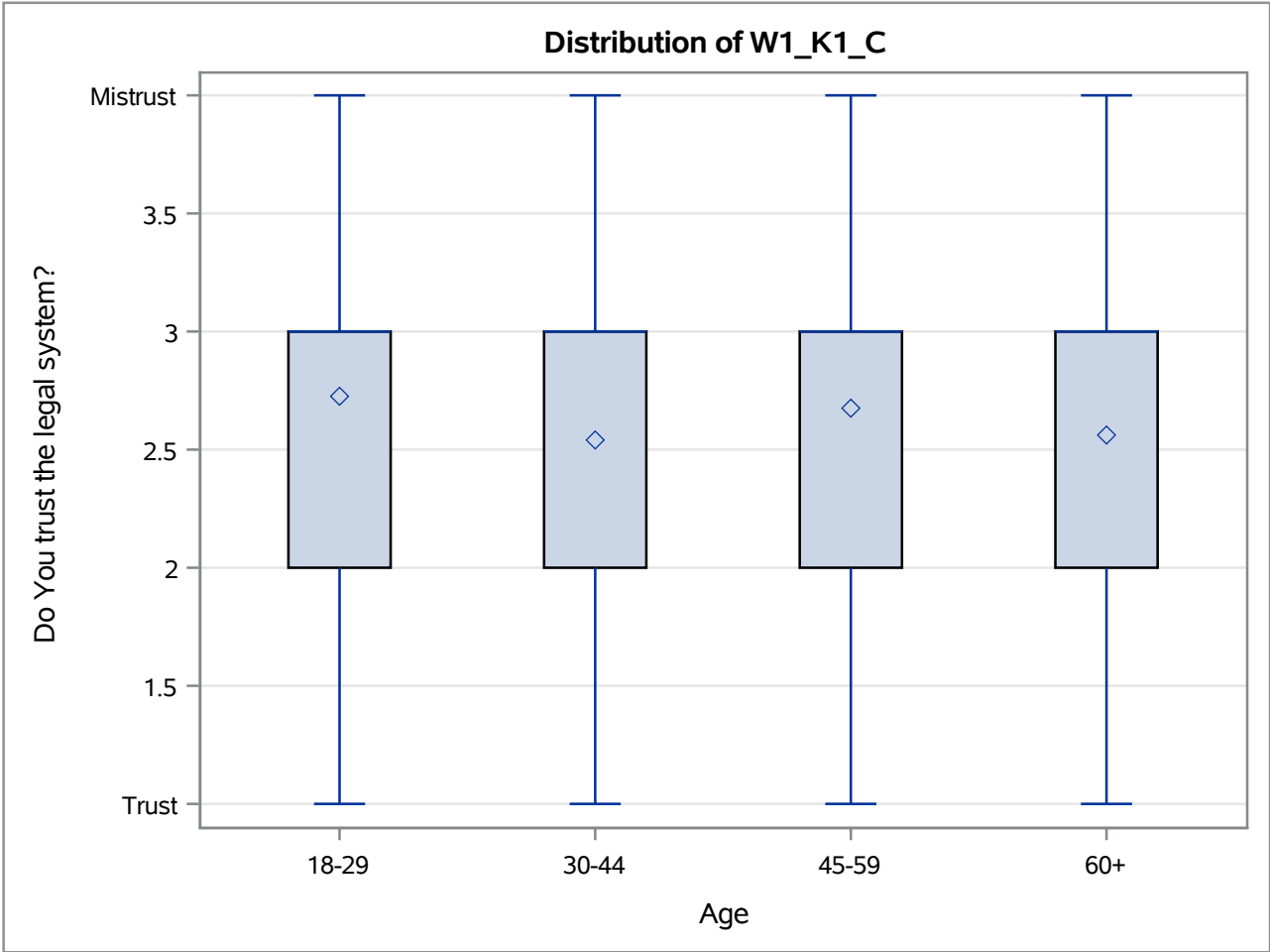
R-Square	Coeff Var	Root MSE	W1_K1_C Mean
0.011647	24.06488	0.627948	2.609398

Source	DF	Anova SS	Mean Square	F Value	Pr > F
PPAGECT4	3	3.14576284	1.04858761	2.66	0.0473



The ANOVA Procedure

Education Level=4



Level of PPAGECT4	N	W1_K1_C	
		Mean	Std Dev
18-29	62	2.72580645	0.68159300
30-44	172	2.54069767	0.58597206
45-59	228	2.67543860	0.62256559
60+	219	2.56164384	0.64933914

The ANOVA Procedure

Age=1

Class Level Information		
Class	Levels	Values
PPEDUCAT	2	High School or lower Some college or higher

Number of Observations Read	397
Number of Observations Used	378

The ANOVA Procedure

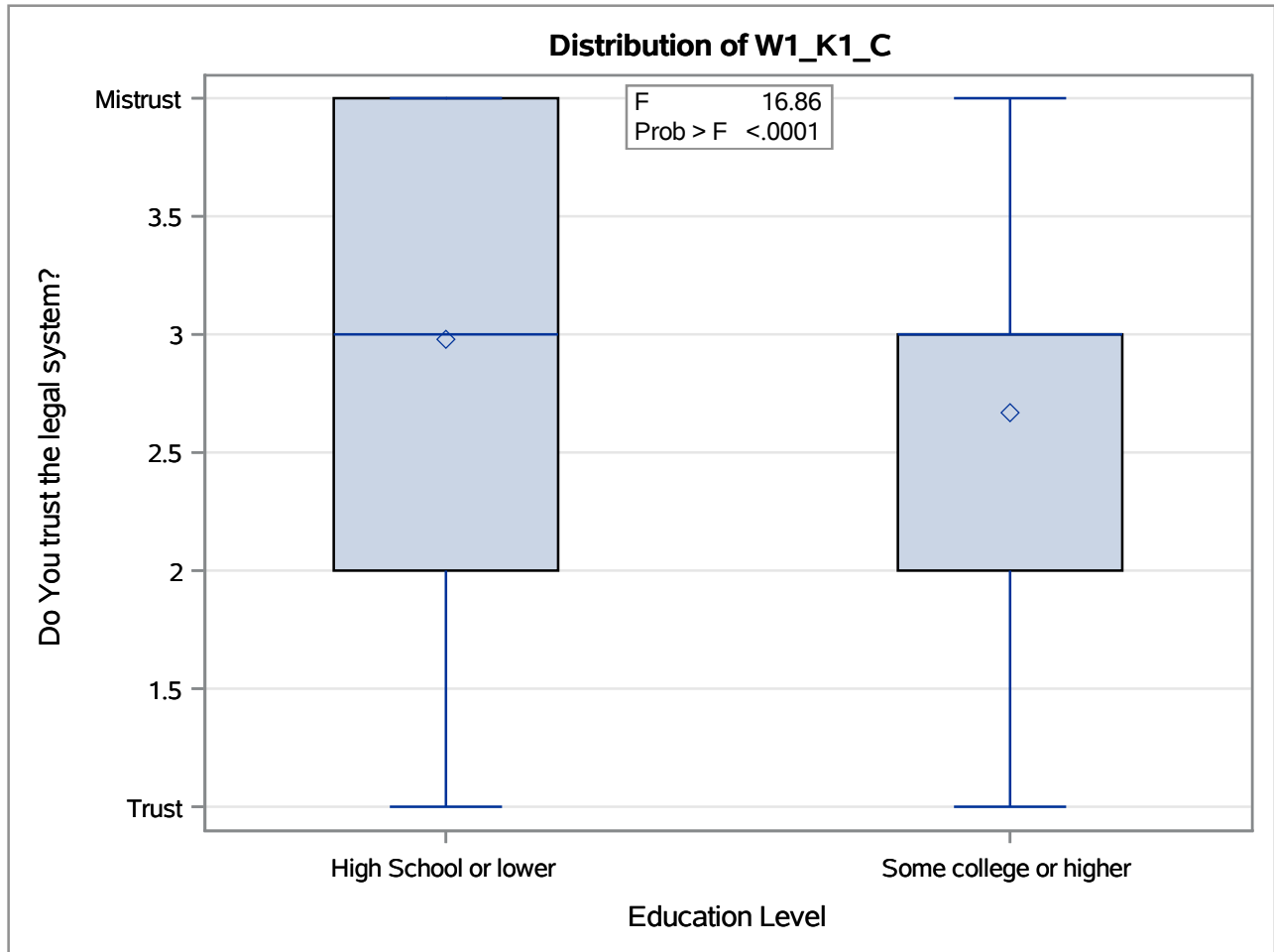
Dependent Variable: W1_K1_C Do You trust the legal system?

Age=1

Source	DF	Sum of Squares	Mean Square	F Value	Pr > F
Model	1	9.1161098	9.1161098	16.86	<.0001
Error	376	203.3600806	0.5408513		
Corrected Total	377	212.4761905			

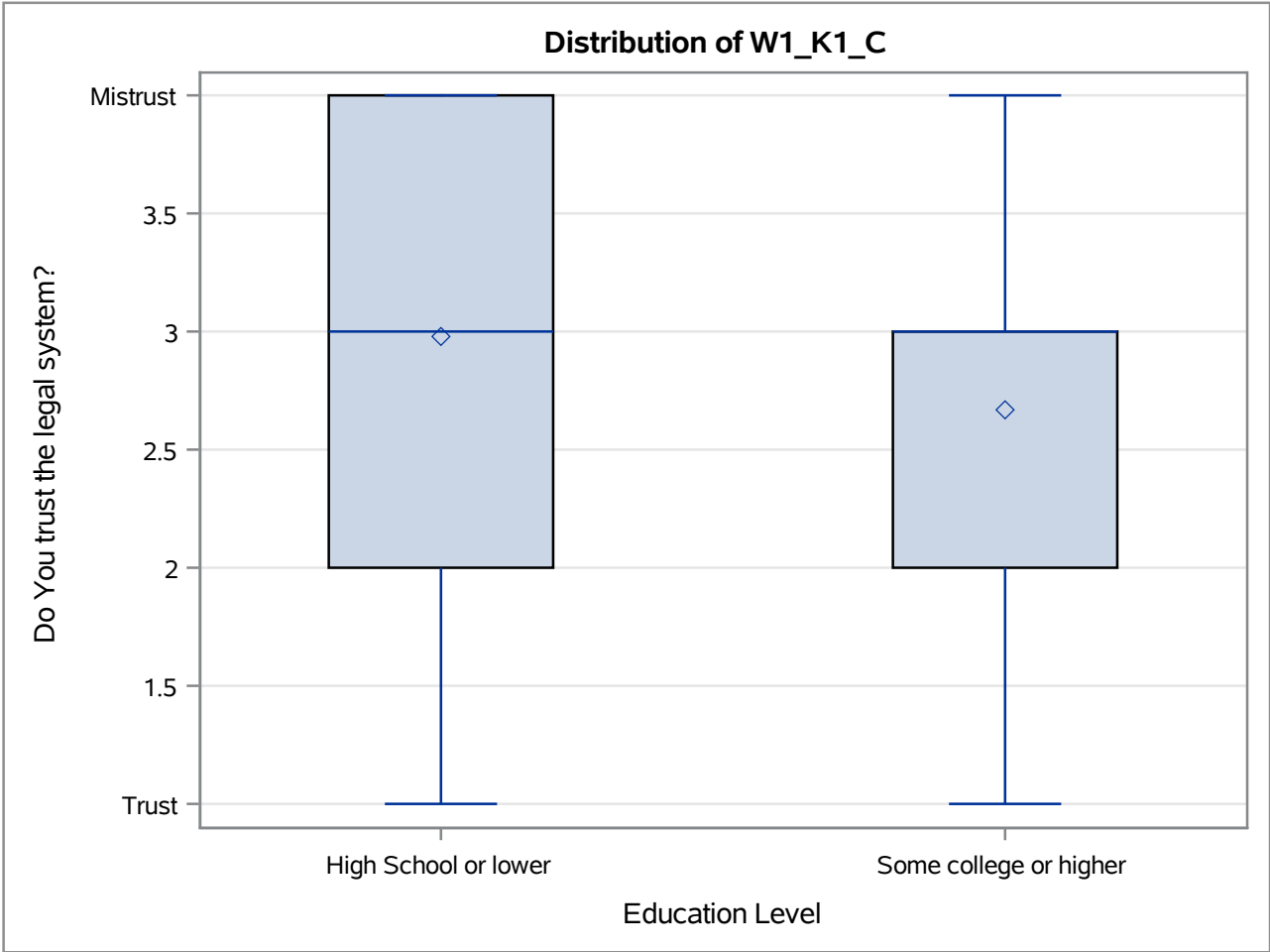
R-Square	Coeff Var	Root MSE	W1_K1_C Mean
0.042904	26.02912	0.735426	2.825397

Source	DF	Anova SS	Mean Square	F Value	Pr > F
PPEDUCAT	1	9.11610984	9.11610984	16.86	<.0001



The ANOVA Procedure

Age=1



Level of PPEDUCAT	N	W1_K1_C	
		Mean	Std Dev
High School or lower	191	2.97905759	0.77431202
Some college or higher	187	2.66844920	0.69345578

The ANOVA Procedure

Age=2

Class Level Information		
Class	Levels	Values
PPEDUCAT	2	High School or lower Some college or higher

Number of Observations Read	489
Number of Observations Used	471

The ANOVA Procedure

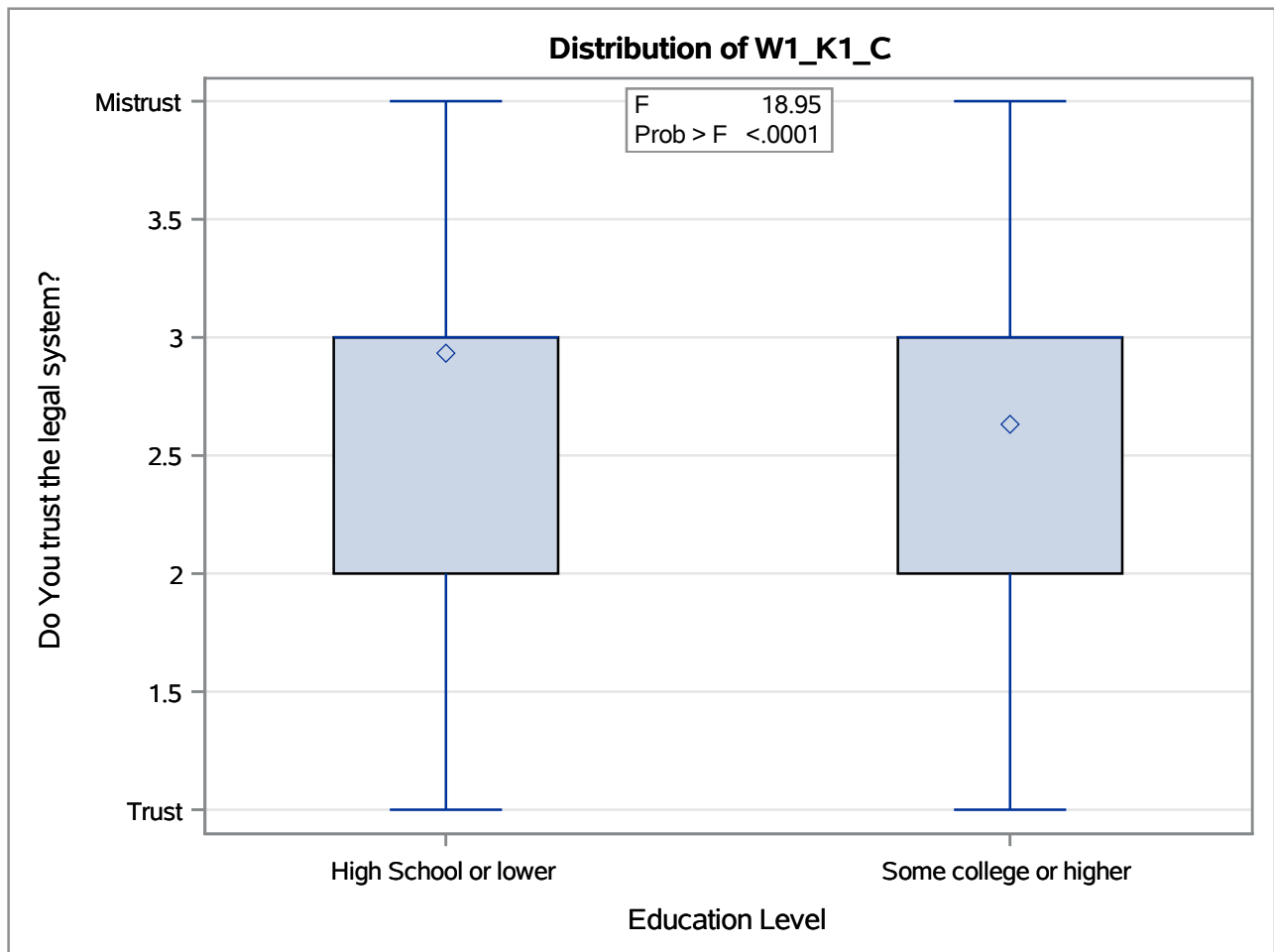
Dependent Variable: W1_K1_C Do You trust the legal system?

Age=2

Source	DF	Sum of Squares	Mean Square	F Value	Pr > F
Model	1	9.6852035	9.6852035	18.95	<.0001
Error	469	239.6693612	0.5110221		
Corrected Total	470	249.3545648			

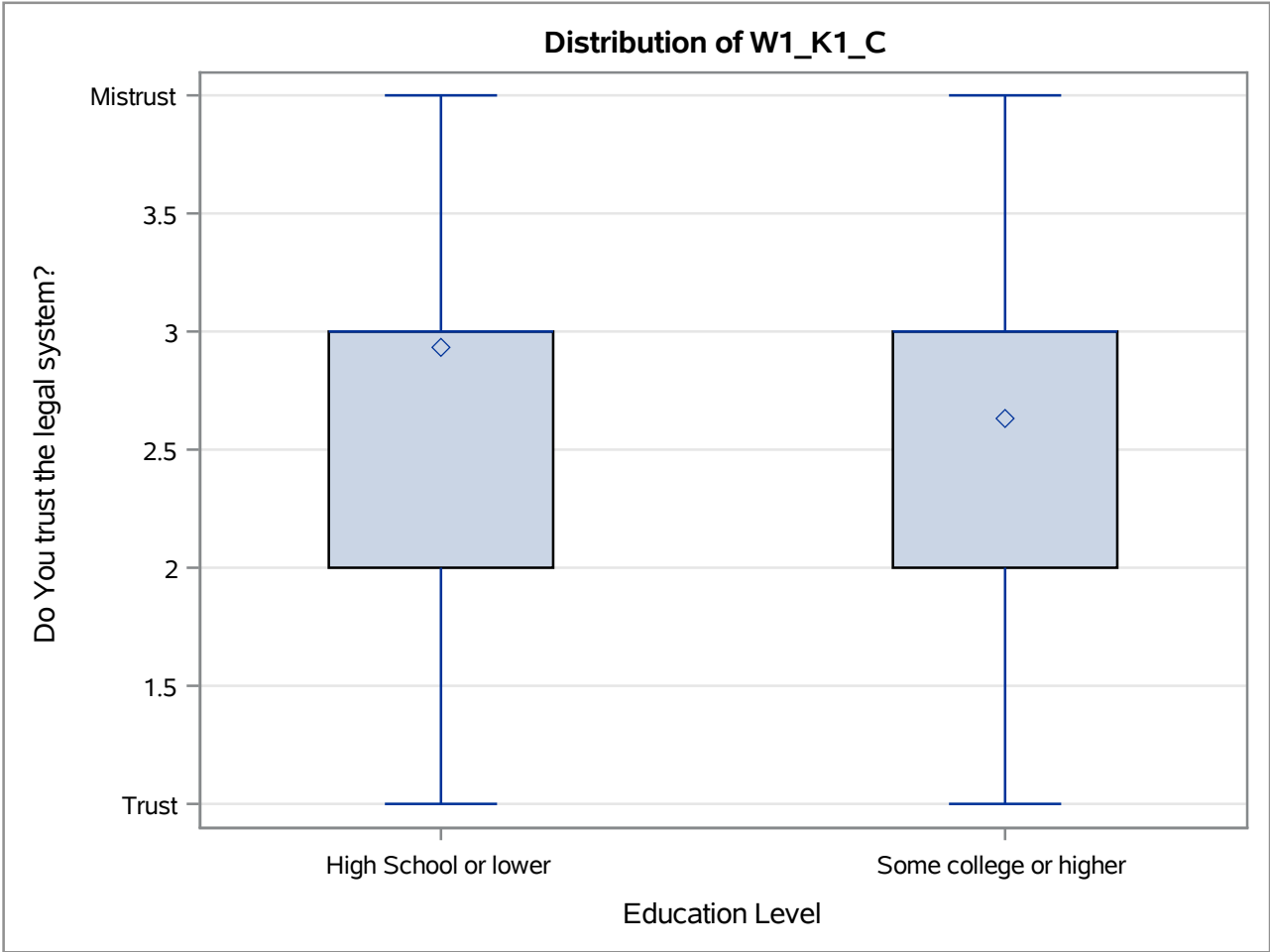
R-Square	Coeff Var	Root MSE	W1_K1_C Mean
0.038841	26.12088	0.714858	2.736730

Source	DF	Anova SS	Mean Square	F Value	Pr > F
PPEDUCAT	1	9.68520351	9.68520351	18.95	<.0001



The ANOVA Procedure

Age=2



Level of PPEDUCAT	N	W1_K1_C	
		Mean	Std Dev
High School or lower	164	2.93292683	0.80741272
Some college or higher	307	2.63192182	0.66028110

The ANOVA Procedure

Age=3

Class Level Information		
Class	Levels	Values
PPEDUCAT	2	High School or lower Some college or higher

Number of Observations Read	710
Number of Observations Used	696

The ANOVA Procedure

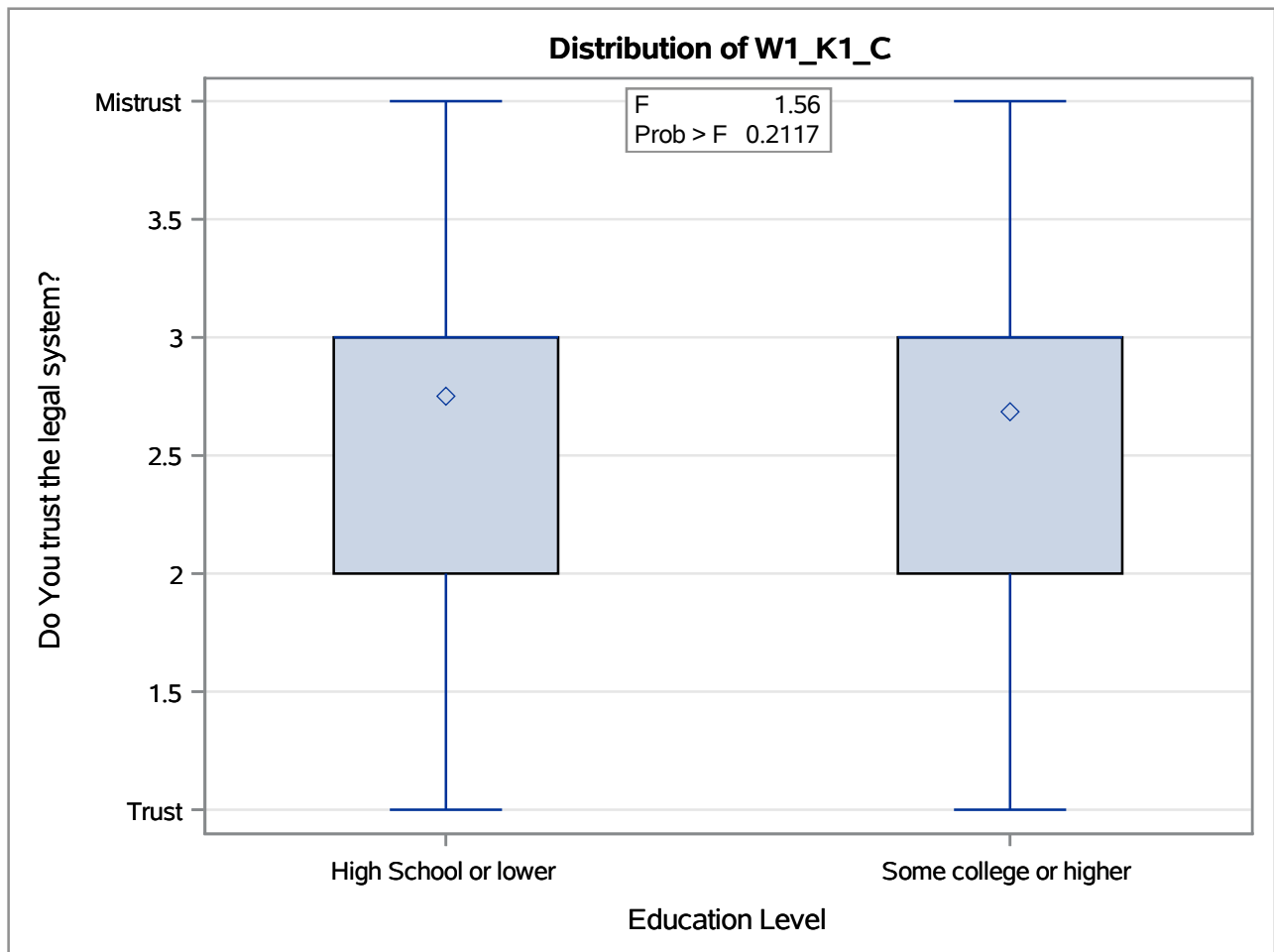
Dependent Variable: W1_K1_C Do You trust the legal system?

Age=3

Source	DF	Sum of Squares	Mean Square	F Value	Pr > F
Model	1	0.7084291	0.7084291	1.56	0.2117
Error	694	314.6651341	0.4534080		
Corrected Total	695	315.3735632			

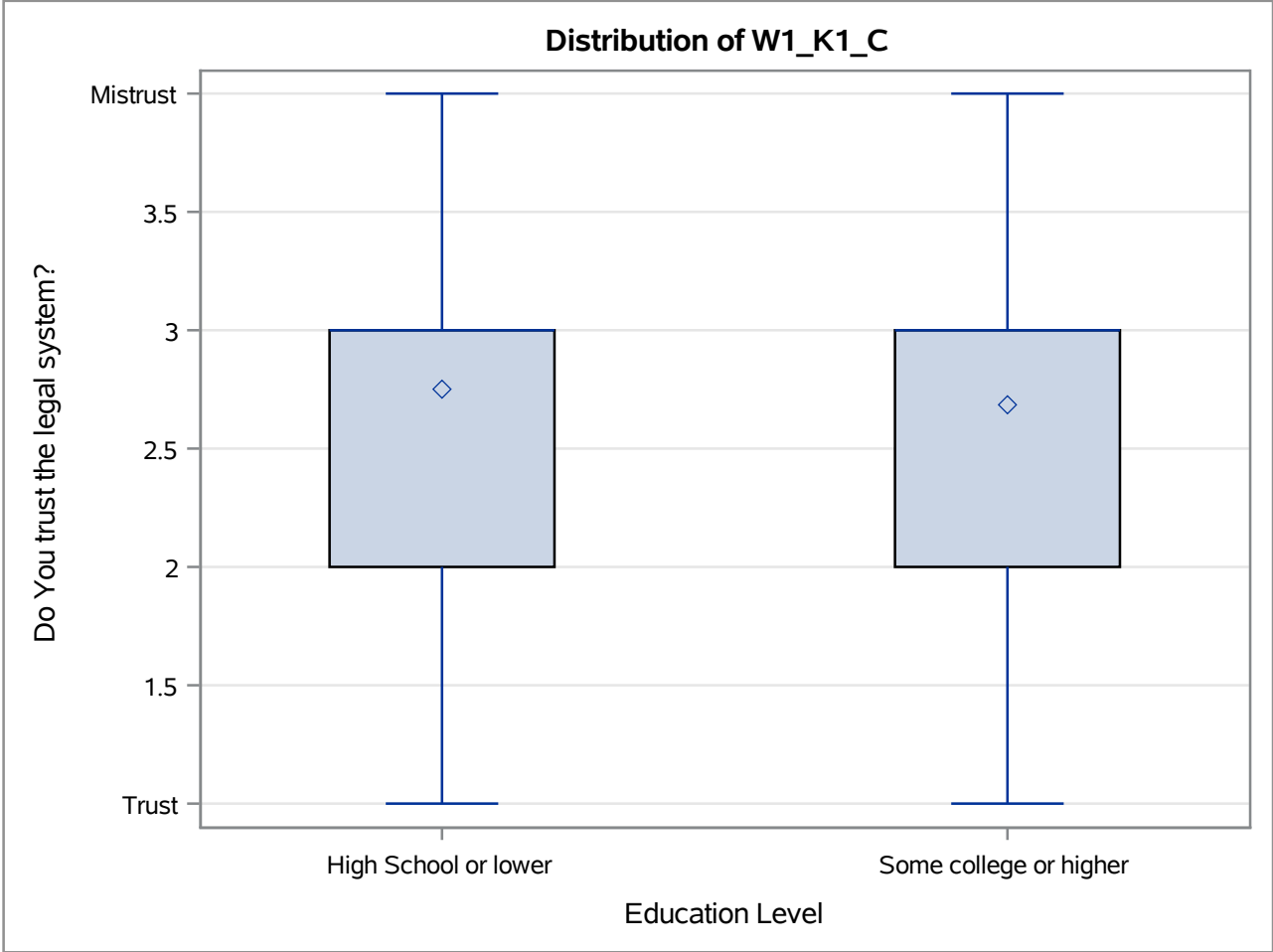
R-Square	Coeff Var	Root MSE	W1_K1_C Mean
0.002246	24.84918	0.673356	2.709770

Source	DF	Anova SS	Mean Square	F Value	Pr > F
PPEDUCAT	1	0.70842912	0.70842912	1.56	0.2117



The ANOVA Procedure

Age=3



Level of PPEDUCAT	N	W1_K1_C	
		Mean	Std Dev
High School or lower	261	2.75095785	0.71471420
Some college or higher	435	2.68505747	0.64731433

The ANOVA Procedure

Age=4

Class Level Information		
Class	Levels	Values
PPEDUCAT	2	High School or lower Some college or higher

Number of Observations Read	698
Number of Observations Used	685

The ANOVA Procedure

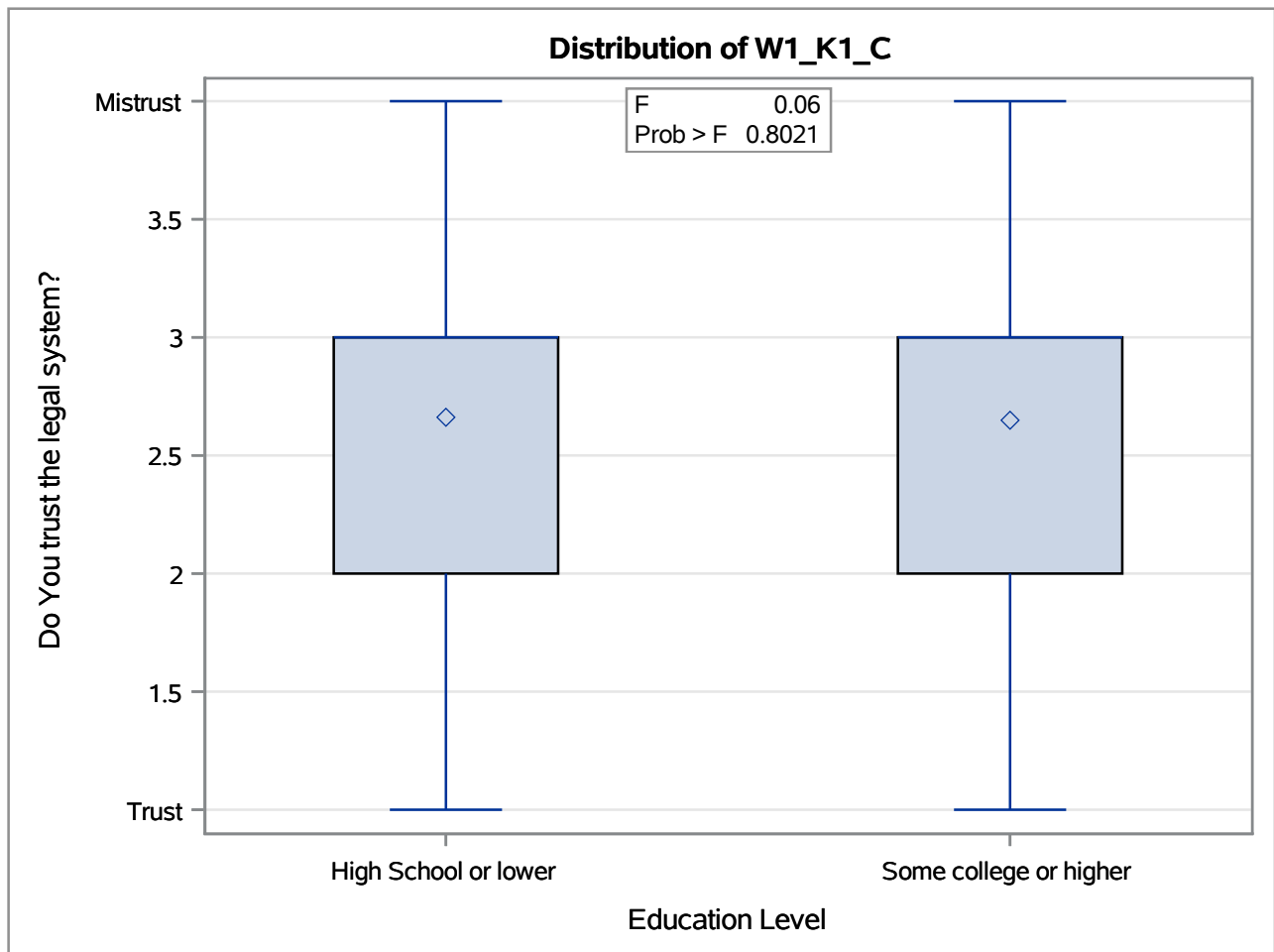
Dependent Variable: W1_K1_C Do You trust the legal system?

Age=4

Source	DF	Sum of Squares	Mean Square	F Value	Pr > F
Model	1	0.0262311	0.0262311	0.06	0.8021
Error	683	284.9752288	0.4172405		
Corrected Total	684	285.0014599			

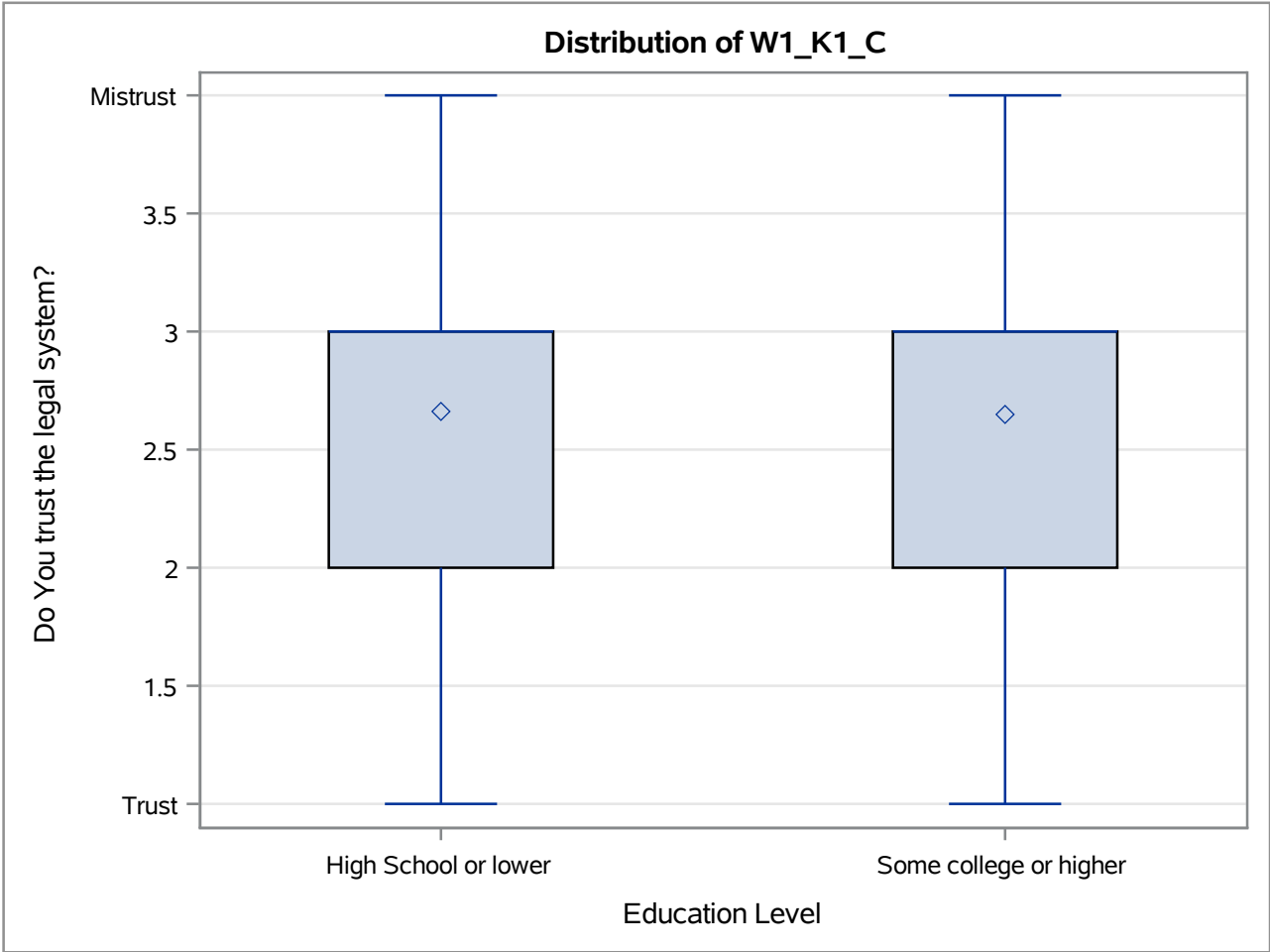
R-Square	Coeff Var	Root MSE	W1_K1_C Mean
0.000092	24.33828	0.645942	2.654015

Source	DF	Anova SS	Mean Square	F Value	Pr > F
PPEDUCAT	1	0.02623109	0.02623109	0.06	0.8021



The ANOVA Procedure

Age=4



Level of PPEDUCAT	N	W1_K1_C	
		Mean	Std Dev
High School or lower	269	2.66171004	0.64128955
Some college or higher	416	2.64903846	0.64892797